

Appendix 2B. Zooplankton

Zoop species list 6trips.xls

Excel file containing complete list of zooplankton taxa names from all samples (Trips 1-6 only), identified to genus or species.

Zoop dendrogram

Detailed dendrogram of all sites containing three or more zooplankton taxa.

Crustacea	Copepoda	Cyclopiformes		<i>Mesocyclops</i>
Crustacea	Copepoda	Cyclopiformes		<i>Mesocyclops</i>
Crustacea	Copepoda	Cyclopiformes		<i>Mesocyclops</i>
Crustacea	Copepoda	Cyclopiformes		<i>Mesocyclops</i>
Crustacea	Copepoda	Cyclopiformes		<i>Metacyclops</i>
Crustacea	Copepoda	Cyclopiformes		<i>Microcyclops</i>
Crustacea	Copepoda	Cyclopiformes		<i>Microcyclops</i>
Crustacea	Copepoda	Cyclopiformes		<i>Microcyclops</i>
Crustacea	Copepoda	Cyclopiformes		<i>Thermocyclops</i>
Crustacea	Copepoda	Cyclopiformes	?Notodelphyidae	
Crustacea	Copepoda	Harpacticiformes		<i>cf. Canthocamptus</i>
Crustacea	Copepoda	Harpacticiformes		<i>cf. Mesochra</i>
Crustacea	Branchiopoda	Anomopoda	Bosminidae	<i>Bosmina</i>
Crustacea	Branchiopoda	Anomopoda	Chydoridae	<i>Alona</i>
Crustacea	Branchiopoda	Anomopoda	Chydoridae	<i>Alona</i>
Crustacea	Branchiopoda	Anomopoda	Chydoridae	<i>Alona</i>
Crustacea	Branchiopoda	Anomopoda	Chydoridae	<i>Alona</i>
Crustacea	Branchiopoda	Anomopoda	Chydoridae	<i>Alona</i>
Crustacea	Branchiopoda	Anomopoda	Chydoridae	<i>Alona</i>
Crustacea	Branchiopoda	Anomopoda	Chydoridae	<i>Alona</i>
Crustacea	Branchiopoda	Anomopoda	Chydoridae	<i>Alona</i>
Crustacea	Branchiopoda	Anomopoda	Chydoridae	<i>Alona</i>
Crustacea	Branchiopoda	Anomopoda	Chydoridae	<i>Alona</i>
Crustacea	Branchiopoda	Anomopoda	Chydoridae	<i>Alona</i>
Crustacea	Branchiopoda	Anomopoda	Chydoridae	<i>Alona</i>
Crustacea	Branchiopoda	Anomopoda	Chydoridae	<i>Alona</i>
Crustacea	Branchiopoda	Anomopoda	Chydoridae	<i>Alona</i>
Crustacea	Branchiopoda	Anomopoda	Chydoridae	<i>Alona</i>
Crustacea	Branchiopoda	Anomopoda	Chydoridae	<i>Alona</i>
Crustacea	Branchiopoda	Anomopoda	Chydoridae	<i>Alona</i>
Crustacea	Branchiopoda	Anomopoda	Chydoridae	<i>Alona</i>
Crustacea	Branchiopoda	Anomopoda	Chydoridae	<i>Alona</i>
Crustacea	Branchiopoda	Anomopoda	Chydoridae	<i>Alona</i>
Crustacea	Branchiopoda	Anomopoda	Chydoridae	<i>Alonella</i>
Crustacea	Branchiopoda	Anomopoda	Chydoridae	<i>Australospilus</i>
Crustacea	Branchiopoda	Anomopoda	Chydoridae	<i>Chydorus</i>
Crustacea	Branchiopoda	Anomopoda	Chydoridae	<i>Dadaya</i>
Crustacea	Branchiopoda	Anomopoda	Chydoridae	<i>Dunhevedia</i>
Crustacea	Branchiopoda	Anomopoda	Chydoridae	<i>Ephemeroporus</i>
Crustacea	Branchiopoda	Anomopoda	Chydoridae	<i>Euryalona</i>
Crustacea	Branchiopoda	Anomopoda	Chydoridae	<i>Leydigia</i>
Crustacea	Branchiopoda	Anomopoda	Chydoridae	<i>Pleuroxus</i>
Crustacea	Branchiopoda	Anomopoda	Chydoridae	<i>Pleuroxus</i>
Crustacea	Branchiopoda	Anomopoda	Chydoridae	<i>Pseudomonospilus</i>
Crustacea	Branchiopoda	Anomopoda	Chydoridae	<i>Rak</i>
Crustacea	Branchiopoda	Anomopoda	Daphniidae	<i>Ceriodaphnia</i>
Crustacea	Branchiopoda	Anomopoda	Daphniidae	<i>Ceriodaphnia</i>
Crustacea	Branchiopoda	Anomopoda	Daphniidae	<i>Daphnia</i>
Crustacea	Branchiopoda	Anomopoda	Daphniidae	<i>Daphnia</i>
Crustacea	Branchiopoda	Anomopoda	Daphniidae	<i>Daphnia</i>
Crustacea	Branchiopoda	Anomopoda	Daphniidae	<i>Daphnia</i>
Crustacea	Branchiopoda	Anomopoda	Daphniidae	<i>Daphnia</i>
Crustacea	Branchiopoda	Anomopoda	Daphniidae	<i>Scapholeberis</i>
Crustacea	Branchiopoda	Anomopoda	Daphniidae	<i>Simocephalus</i>
Crustacea	Branchiopoda	Anomopoda	Daphniidae	<i>Simocephalus</i>
Crustacea	Branchiopoda	Anomopoda	Daphniidae	<i>Simocephalus</i>
Crustacea	Branchiopoda	Anomopoda	Daphniidae	<i>Simocephalus</i>
Crustacea	Branchiopoda	Anomopoda	Daphniidae	<i>Simocephalus</i>
Crustacea	Branchiopoda	Anomopoda	Daphniidae	<i>Simocephalus</i>
Crustacea	Branchiopoda	Anomopoda	Ilyocryptidae	<i>Ilyocryptus</i>
Crustacea	Branchiopoda	Anomopoda	Ilyocryptidae	<i>Ilyocryptus</i>
Crustacea	Branchiopoda	Anomopoda	Macrothricidae	<i>Macrothrix</i>
Crustacea	Branchiopoda	Anomopoda	Macrothricidae	<i>Macrothrix</i>
Crustacea	Branchiopoda	Anomopoda	Macrothricidae	<i>Macrothrix</i>
Crustacea	Branchiopoda	Anomopoda	Macrothricidae	<i>Macrothrix</i>
Crustacea	Branchiopoda	Anomopoda	Macrothricidae	<i>Macrothrix</i>
Crustacea	Branchiopoda	Anomopoda	Macrothricidae	<i>Macrothrix</i>
Crustacea	Branchiopoda	Anomopoda	Moinidae	<i>Moina</i>
Crustacea	Branchiopoda	Anomopoda	Moinidae	<i>Moina</i>
Crustacea	Branchiopoda	Anomopoda	Moinidae	<i>Moina</i>

Crustacea	Branchiopoda
Crustacea	Branchiopoda
Crustacea	Branchiopoda
Crustacea	Branchiopoda
Crustacea	Branchiopoda
Crustacea	Branchiopoda
Crustacea	Ostracoda
Crustacea	Ostracoda
Crustacea	Ostracoda
Crustacea	Ostracoda
Crustacea	Ostracoda
Crustacea	Ostracoda
Crustacea	Ostracoda
Crustacea	Ostracoda
Crustacea	Ostracoda
Crustacea	Ostracoda

Anomopoda
Anomopoda
Ctenopoda
Ctenopoda
Ctenopoda
Ctenopoda

Moinidae

Moina
Neothrix
Diaphanosoma
Diaphanosoma
Diaphanosoma
Diaphanosoma
cf. Australocypris
Bennelongia
cf. Candonocypris
cf. Candonopsis
cf. Cypretta
cf. Diacypris
cf. Limnocythere
Newnhamia
cf. Stenocypris

Others'
Others'
Others'
Others'
Others'
Others'

Species	Sspecies	other	Sp. No
sp.			1
sp.			2
sp.			3
<i>bathystoma</i>			4
<i>cf. discoides</i>			5
<i>megastoma</i>			6
<i>rotundata</i>			7
sp.a			8
sp.b			9
sp.i			10
sp.c			11
sp.d			12
sp.e			13
sp.f			14
sp.g			15
sp.j			16
<i>aculeata</i>			17
<i>aerophila</i>			18
<i>cf. arcelloides</i>			19
<i>cf. circularis</i>			20
<i>discoides</i>			21
<i>cf. laevigata</i>			22
sp.a			23
sp.b			24
sp.c			25
sp.d			26
sp.			27
sp.			28
sp.			29
<i>cf. acuminata</i>			30
<i>cf. amphora</i>			31
<i>cf. bryophila</i>			32
<i>corona</i>			33
<i>cf. cylindrus</i>			34
<i>cf. decloitrei</i>			35
<i>elegans</i>			36
<i>gramen</i>			37
<i>labiosa</i>			38
<i>lanceolata</i>			39
<i>limnetica</i>			40
<i>lismorensis</i>			41
<i>cf. mamillaris</i>			42
<i>cf. manicata</i>			43
<i>cf. oblonga</i>			44
<i>cf. urceolata</i>			45
<i>varians</i>			46
sp.a			47
sp.b			48
sp.c			49
sp.d			50
sp.e			51
sp.f			52
sp.g			53
sp.h			54
sp.i			55
sp.j			56
sp.l			57
sp.m			58
sp.o			59
sp.p			60
sp.q			61
sp.r			62

sp.s		63
sp.t		64
sp.		65
cf. <i>modesta</i>		66
<i>spiralis</i>		67
cf. <i>oviformis</i>		68
cf. <i>tuberculata</i>		69
sp.		70
sp.		71
sp.		72
sp.		73
sp.		74
sp.		75
<i>neptunia</i>		76
sp.		77
<i>asymmetrica</i>		78
<i>brightwellii</i>		79
<i>girodi</i>		80
<i>prionota</i>	<i>henrietta</i>	81
<i>sieboldii</i>		82
n.sp.		83
sp.		84
<i>coelata</i>		85
<i>fissa</i>		86
cf. <i>navicula</i>		87
<i>angularis</i>		88
<i>angularis</i>	<i>bidens</i>	89
cf. <i>bennini</i>		90
<i>bidentatus</i>		91
<i>budapestinensis</i>		92
<i>calyciflorus</i>		93
<i>calyciflorus</i>	<i>amphiceros</i>	94
<i>calyciflorus</i>	<i>dorcas</i>	95
<i>calyciflorus</i>	<i>gigantea</i>	96
<i>diversicornis</i>		97
cf. <i>durgae</i>		98
<i>falcatus</i>		99
<i>ibericus</i>		100
<i>keikoa</i>		101
<i>lyratus</i>		102
<i>nilsoni</i>		103
<i>novaezealandiae</i>		104
cf. <i>plicatilis</i>		105
cf. <i>pterodinooides</i>		106
<i>quadridentatus</i>		107
<i>quadridentatus</i>	<i>cluniorbicularis</i>	108
cf. <i>rotundiformis</i>		109
cf. <i>sericus</i>		110
cf. <i>urceolaris</i>		111
n.sp.a		112
n.sp.b		113
n.sp.c		114
sp.		115
<i>australis</i>		116
<i>cochlearis</i>		117
<i>lenzi</i>		118
<i>procurva</i>		119
<i>procurva</i>	<i>robusta</i>	120
cf. <i>quadrata</i>		121
<i>slacki</i>		122
<i>tropica</i>		123
n.sp.		124
sp.		125

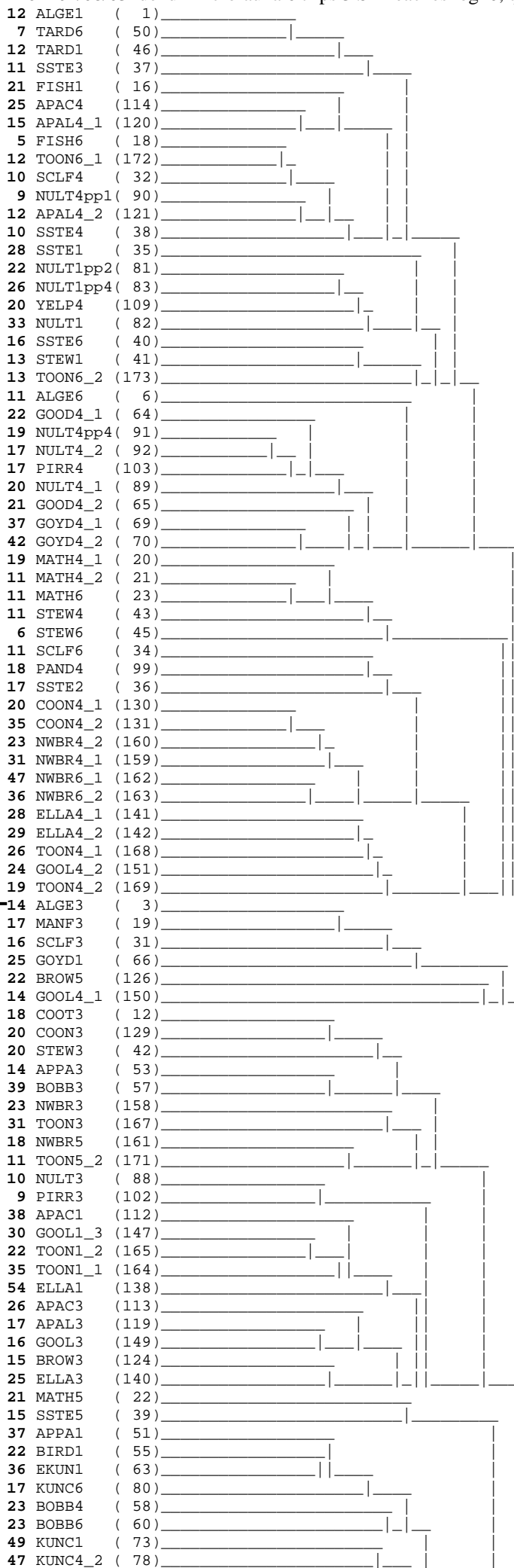
<i>patulus</i>		126
<i>quadricornis</i>		127
<i>campanulata</i>		128
cf. <i>pelagica</i>		129
sp.		130
<i>coenobasis</i>		131
<i>dossuarius</i>		132
<i>natans</i>		133
sp.		134
<i>psitta</i>		135
<i>caudatus</i>		136
<i>epicharis</i>		137
nr <i>aquilis</i>		138
<i>cruentum</i>		139
cf. <i>mustela</i>		140
<i>putorius</i>		141
<i>uncinatum</i>		142
sp.		143
<i>lutetiae</i>		144
<i>macroura</i>		145
<i>chlaena</i>		146
<i>subtilis</i>		147
<i>tentaculatus</i>		148
<i>propatula</i>		149
cf. <i>dilatata</i>		150
<i>pedunculata</i>		151
cf. <i>crystallina</i>		152
sp.		153
<i>ariprepes</i>		154
sp.a		155
sp.b		156
? <i>ovalis</i>		157
<i>saltans</i>	<i>indica</i>	158
<i>brandorffi</i>		159
<i>fennica</i>		160
<i>intermedia</i>		161
<i>mira</i>		162
<i>polyodonta</i>		163
sp.		164
<i>aurita</i>		165
<i>deridderae</i>		166
<i>myersi</i>		167
<i>bifastigata</i>		168
cf. <i>bulla</i>		169
cf. <i>closterocerca</i>		170
<i>crepida</i>		171
<i>curvicornis</i>		172
cf. <i>doryssa</i>		173
<i>flexilis</i>		174
<i>furcata</i>		175
<i>hamata</i>		176
<i>hastata</i>		177
<i>leontina</i>		178
<i>ludwigi</i>		179
<i>ludwigi</i>	<i>ercodes</i>	180
<i>luna</i>		181
<i>lunaris</i>		182
<i>papuana</i>		183
<i>quadridentata</i>		184
<i>ruttneri</i>		185
<i>signifera</i>		186
cf. <i>uenoi</i>		187
<i>unguitata</i>		188

<i>ungulata</i>		189
n.sp.a		190
n.sp.b		191
n.sp.c		192
sp.		193
sp.		194
<i>adriatica</i>		195
<i>uncinata</i>		196
<i>uncinata</i>	<i>bicuspidata</i>	197
sp.		198
cf. <i>acuminata</i>		199
<i>benjamini</i>		200
<i>biloba</i>		201
cf. <i>elliptica</i>		202
cf. <i>imbricata</i>		203
<i>ovalis</i>		204
cf. <i>rhodesiana</i>		205
cf. <i>rhomboides</i>		206
<i>rottenburgi</i>		207
<i>triptera</i>		208
n.sp.a		209
n.sp.b		210
n.sp.c		211
sp.a		212
sp.b		213
cf. <i>janickii</i>		214
<i>torulosa</i>		215
<i>salpina</i>		216
<i>ventralis</i>		217
<i>catellina</i>		218
<i>catellina</i>	<i>major</i>	219
cf. <i>forficula</i>		220
<i>gibba</i>		221
cf. <i>gibba</i>	<i>microdactyla</i>	222
<i>gisleni</i>		223
<i>globata</i>		224
<i>megalocephala</i>		225
cf. <i>pachydactyla</i>		226
cf. <i>panarista</i>		227
<i>sterea</i>		228
cf. <i>tenuior</i>		229
cf. <i>tinca</i>		230
n.sp.a		231
n.sp.b		232
n.sp.c		233
n.sp.d		234
n.sp.f		235
n.sp.g		236
sp.a		237
sp.b		238
sp.c		239
<i>ehrenbergi</i>		240
<i>thoides</i>		241
n.sp.		242
<i>dentata</i>		243
<i>diaphora</i>		244
sp.		245
cf. <i>allantois</i>		246
cf. <i>collaris</i>		247
<i>copeus</i>		248
cf. <i>pseudocerberus</i>		249
cf. <i>tripus</i>		250
sp.		251

<i>selenura</i>		252
<i>cf. kostei</i>		253
<i>cf. similis</i>		254
<i>sp.</i>		255
<i>bostjani</i>		256
<i>sp.</i>		257
<i>dolichoptera</i>		258
<i>remata</i>		259
<i>sp.</i>		260
<i>grandis</i>		261
<i>jollyi</i>		262
<i>oblonga</i>		263
<i>pectinata</i>		264
<i>stylata</i>		265
n.sp.b		266
<i>sp.</i>		267
<i>complanata</i>		268
<i>sulcata</i>		269
<i>incisa</i>		270
<i>patina</i>		271
n.sp.a		272
<i>tasmaniensis</i>		273
<i>sp.</i>		274
<i>volvocicola</i>		275
<i>bicristata</i>		276
<i>pusilla</i>		277
<i>cf. rattus</i>		278
<i>rattus</i>	<i>carinata</i>	279
<i>similis</i>		280
<i>cf. similis</i>	<i>grandis</i>	281
<i>stylata</i>		282
<i>cf. weberi</i>		283
<i>sp.a</i>		284
<i>sp.b</i>		285
<i>pocillum</i>		286
<i>tetractis</i>	<i>similis</i>	287
<i>truncata</i>		288
<i>spinifera</i>		289
<i>australiensis</i>		290
<i>grandis</i>		291
<i>longiseta</i>		292
<i>cf. novaezealandiae</i>		293
<i>opoliensis</i>		294
<i>passa</i>		295
<i>pejleri</i>		296
<i>cf. terminalis</i>		297
<i>sp.</i>		298
<i>brehmi</i>		299
<i>triarticulata</i>		300
<i>canberra</i>		301
<i>lucasi</i>		302
<i>nr. lucasi</i>		303
<i>zeidleri</i>		304
<i>lumholtzi</i>		305
<i>cf. dengizicus</i>		306
<i>australis</i>		307
<i>sp.</i>		308
<i>sp.</i>		309
<i>australiensis</i>		310
<i>sp.</i>		311
<i>apericornis</i>		312
<i>cf. australiensis</i>		313
<i>cf. dadayi</i>		314

<i>cf. darwini</i>		315
<i>cf. kieferi</i>		316
<i>cf. notius</i>		317
<i>pseudospinus</i>		318
<i>mortoni</i>		319
<i>cf. varicans</i>		320
sp.a		321
sp.b		322
<i>decipiens</i>		323
		324
sp.		325
sp.		326
<i>meridionalis</i>		327
<i>cf. cambouei</i>		328
<i>cf. diaphana</i>		329
<i>cf. guttata</i>		330
<i>macrocopa</i>		331
<i>cf. pulchella</i>		332
<i>cf. rectangula</i>		333
<i>rectangula</i>	<i>novaezealandiae</i>	334
<i>rigidicaudis</i>		335
nr <i>rigidicaudis</i>		336
<i>cf. setuloides</i>		337
<i>cf. willisi</i>		338
sp.a		339
sp.b		340
sp.c		341
sp.d		342
sp.e		343
sp.		344
<i>cf. elongatus</i>		345
sp.		346
<i>macrops</i>		347
<i>crassa</i>		348
<i>cf. barroisi</i>		349
<i>orientalis</i>		350
sp.		351
<i>jugosus</i>		352
sp.		353
<i>diporus</i>		354
n.sp.		355
<i>cornuta</i>		356
sp.		357
<i>carinata</i>		358
<i>cephalata</i>		359
<i>lumholtzi</i>		360
<i>cf. projecta</i>		361
sp.		362
<i>kingi</i>		363
<i>cf. gibbosus</i>		364
<i>heilongjiangensis</i>		365
<i>victoriensis</i>		366
sp.		367
<i>raridentatus</i>		368
sp.		369
<i>breviseta</i>		370
<i>cf. indistincta</i>		371
<i>cf. longiseta</i>		372
<i>spinosa</i>		373
sp.		374
<i>cf. australiensis</i>		375
<i>cf. micrura</i>		376
<i>cf. tenuicornis</i>		377

sp.		378
sp.		379
<i>excisum</i>		380
cf. <i>sarsi</i>		381
<i>unguiculatum</i>		382
sp.		383
sp.		384
cf. <i>barangaroo</i>		385
sp.		386
		387
sp.		388
sp.		389
		390
sp.		391
sp.		392
	Hirudinea: fluke cercaria	393
	Mollusca: mussel glochidia	394
	conchostracans: C. zyzicus	395
	fair shrimp: Branchinella	396
	Arachnida: hydracarinid mite	397
	Arachnida: oribatid mite	398



**I April,
 late summer trips
 High diversity**

G1



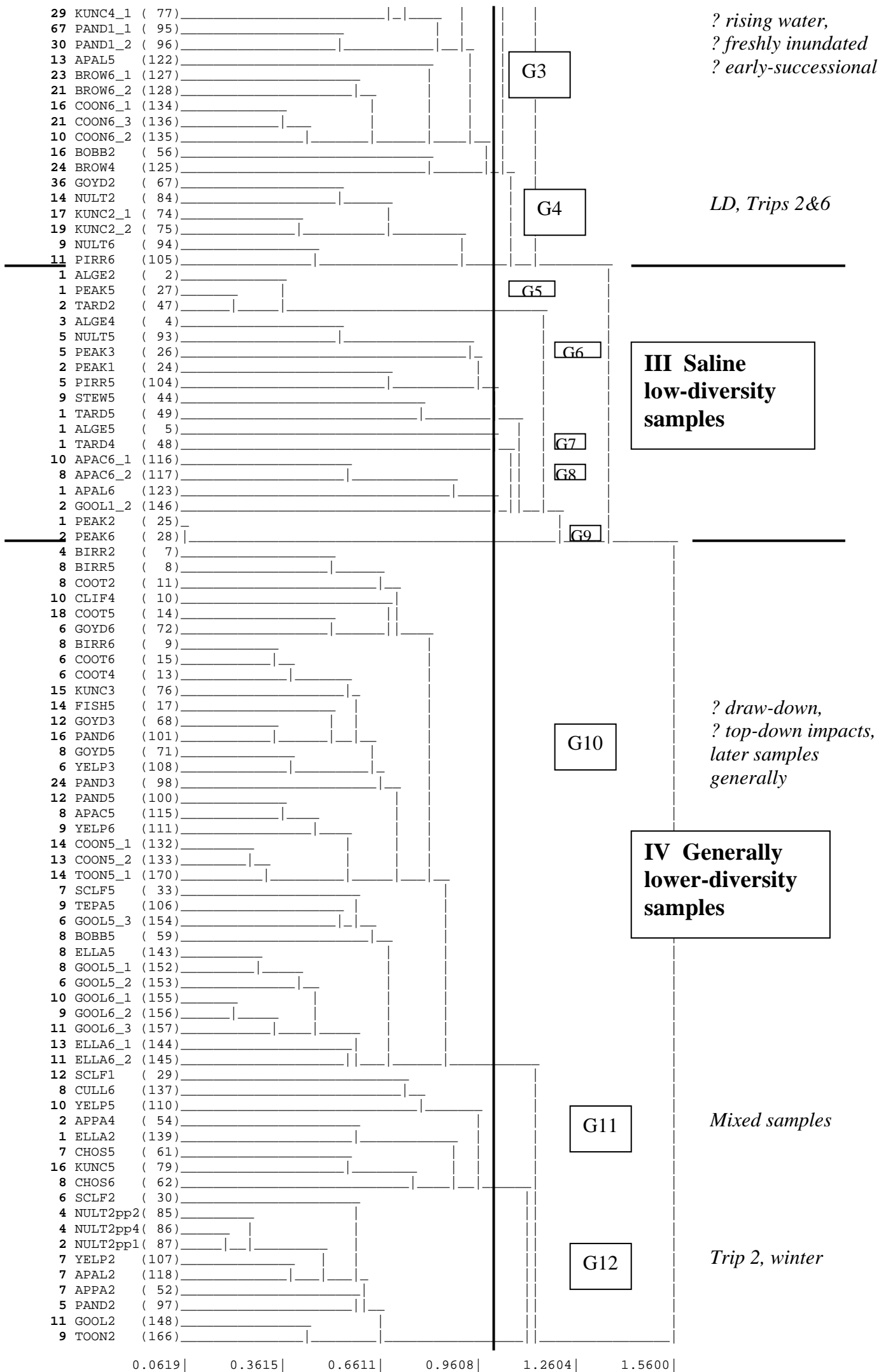
*Trip 3,
 early summer after
 big flood*

G2

**II Other
 high-diversity
 samples**

G3





Appendix 2C. Macroinvertebrates

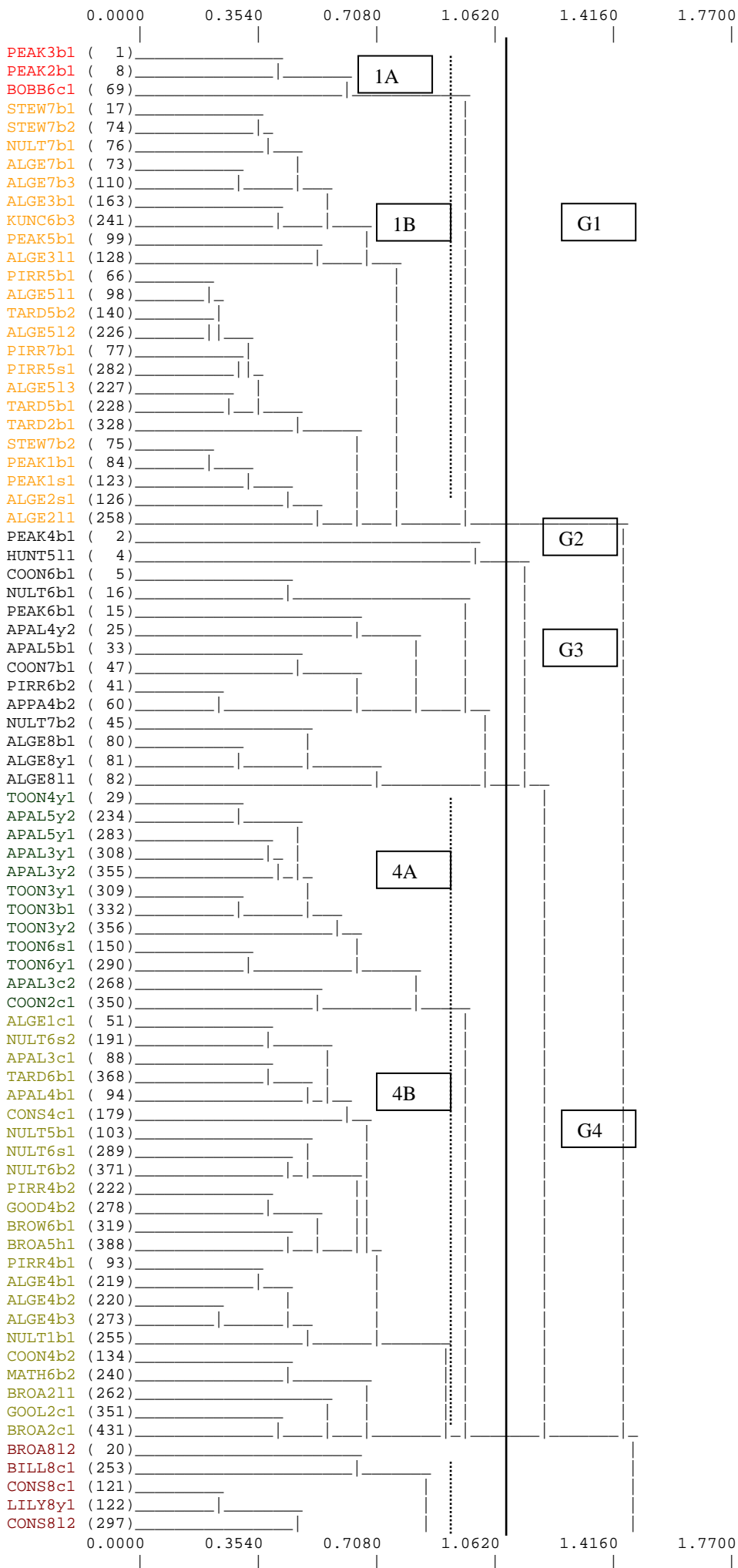
Bug dendrogram.doc

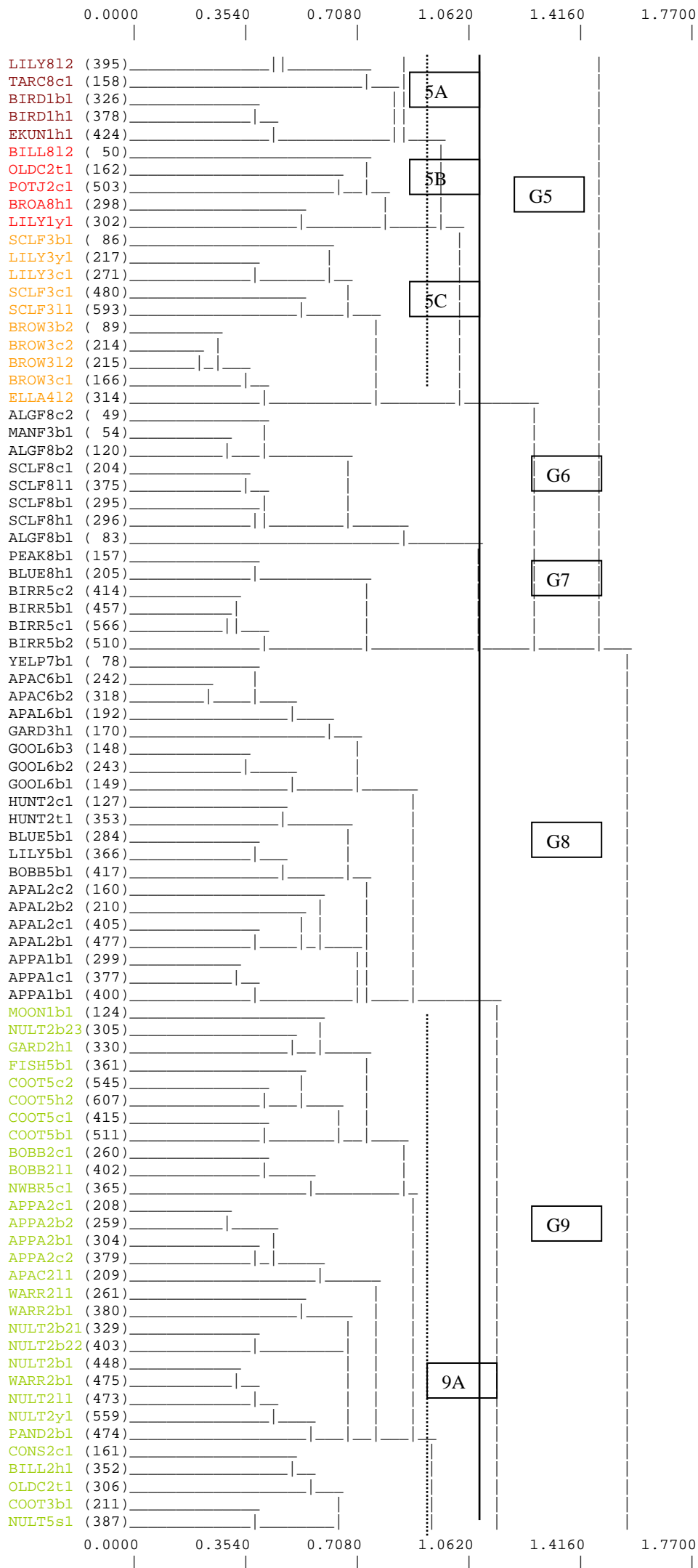
Detailed dendrogram of all sites containing more than one macroinvertebrate taxa.

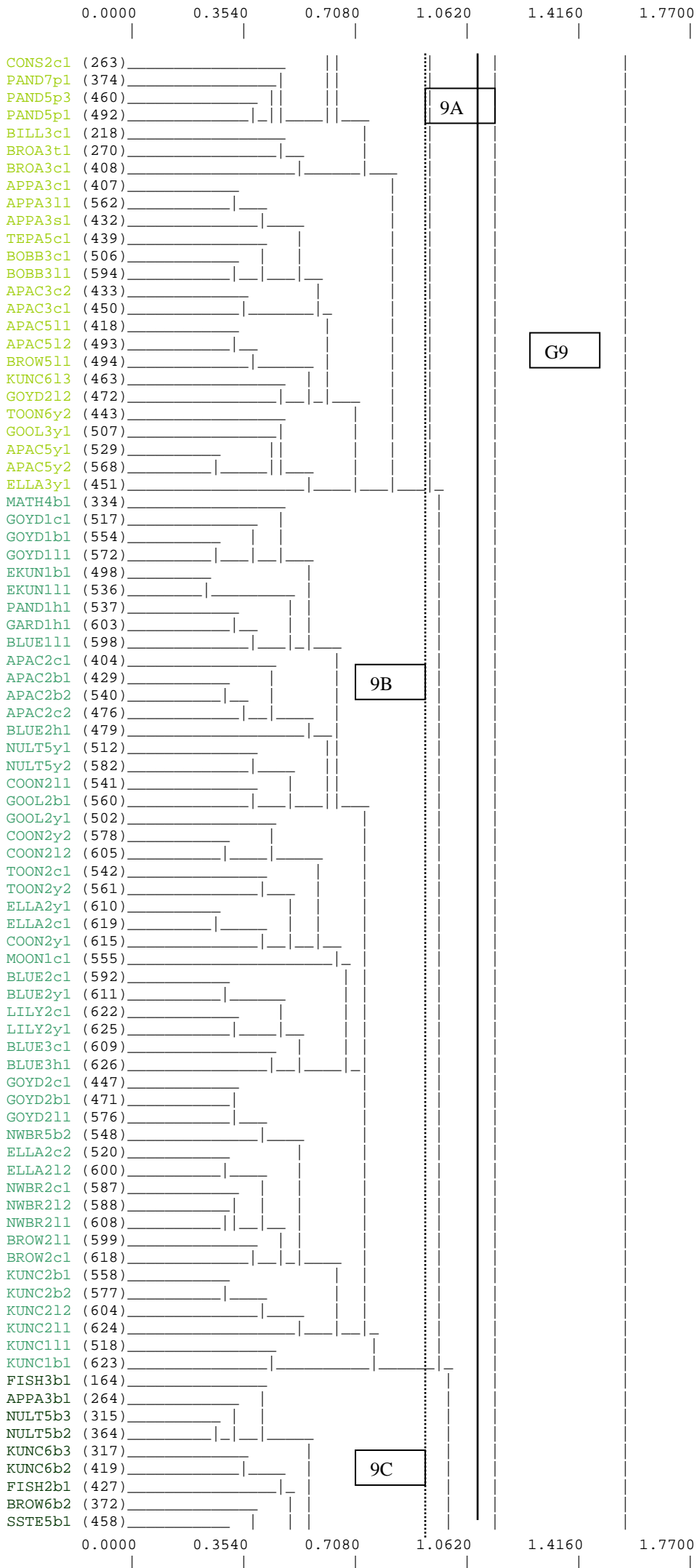
Family Graphs.doc

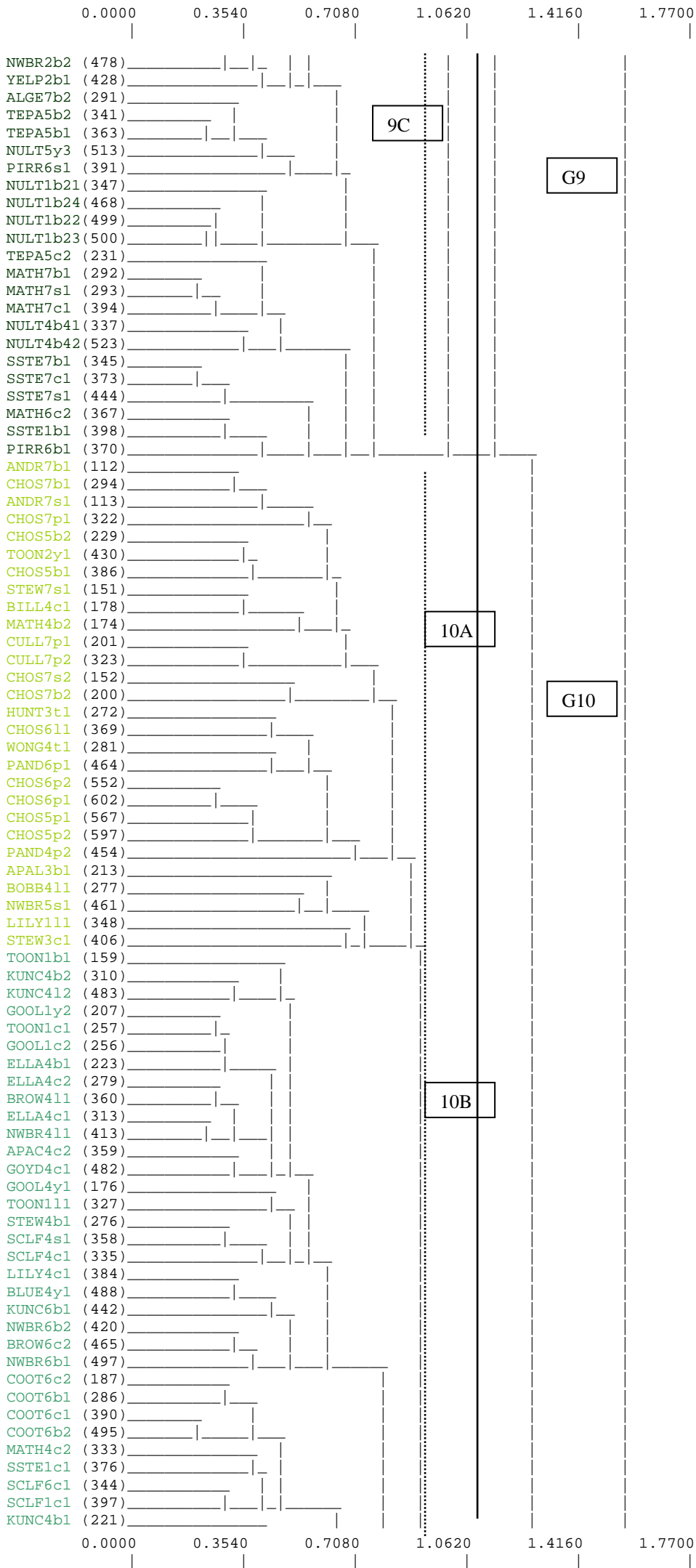
Word document containing pie graphs of percentage abundance per trip for each reach.

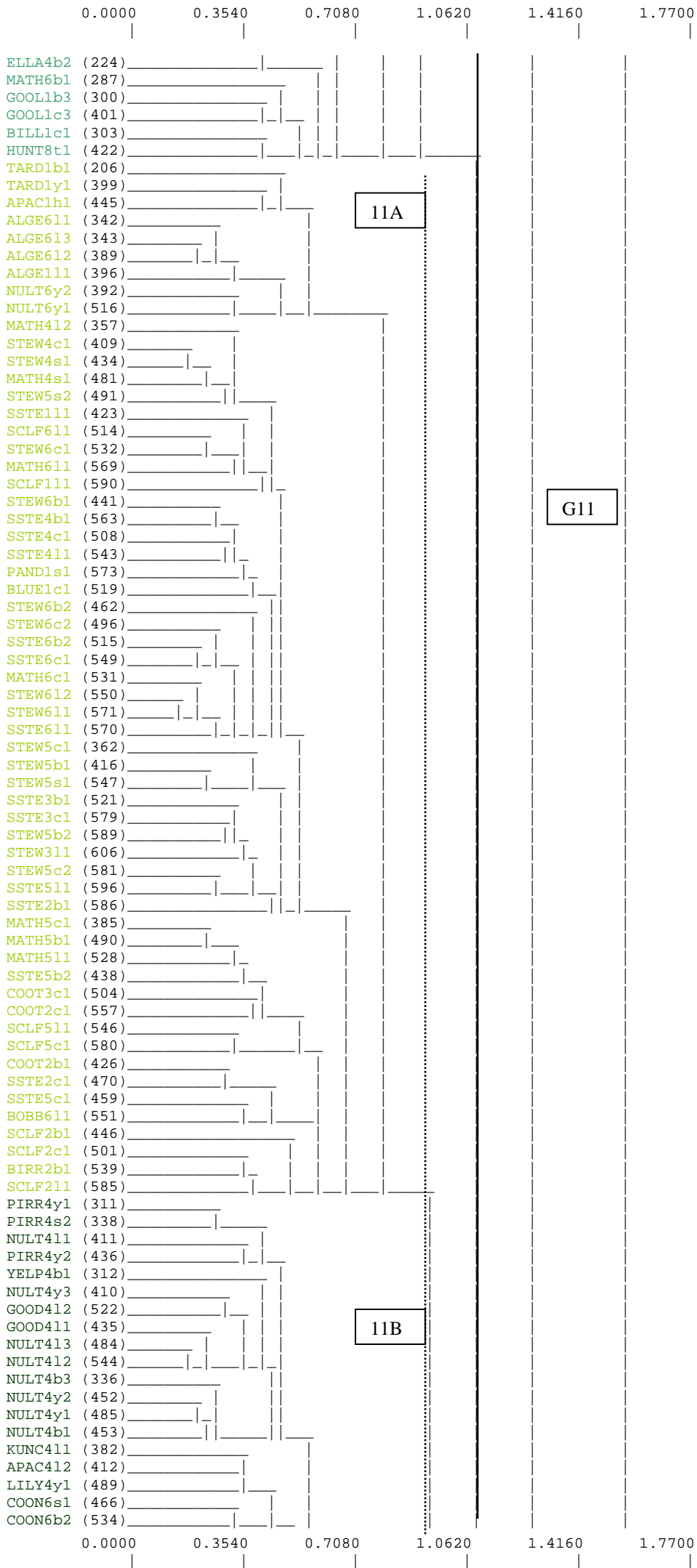
dend BUGS7 - log10tr, sing&dub spp removed BUG71.den.doc

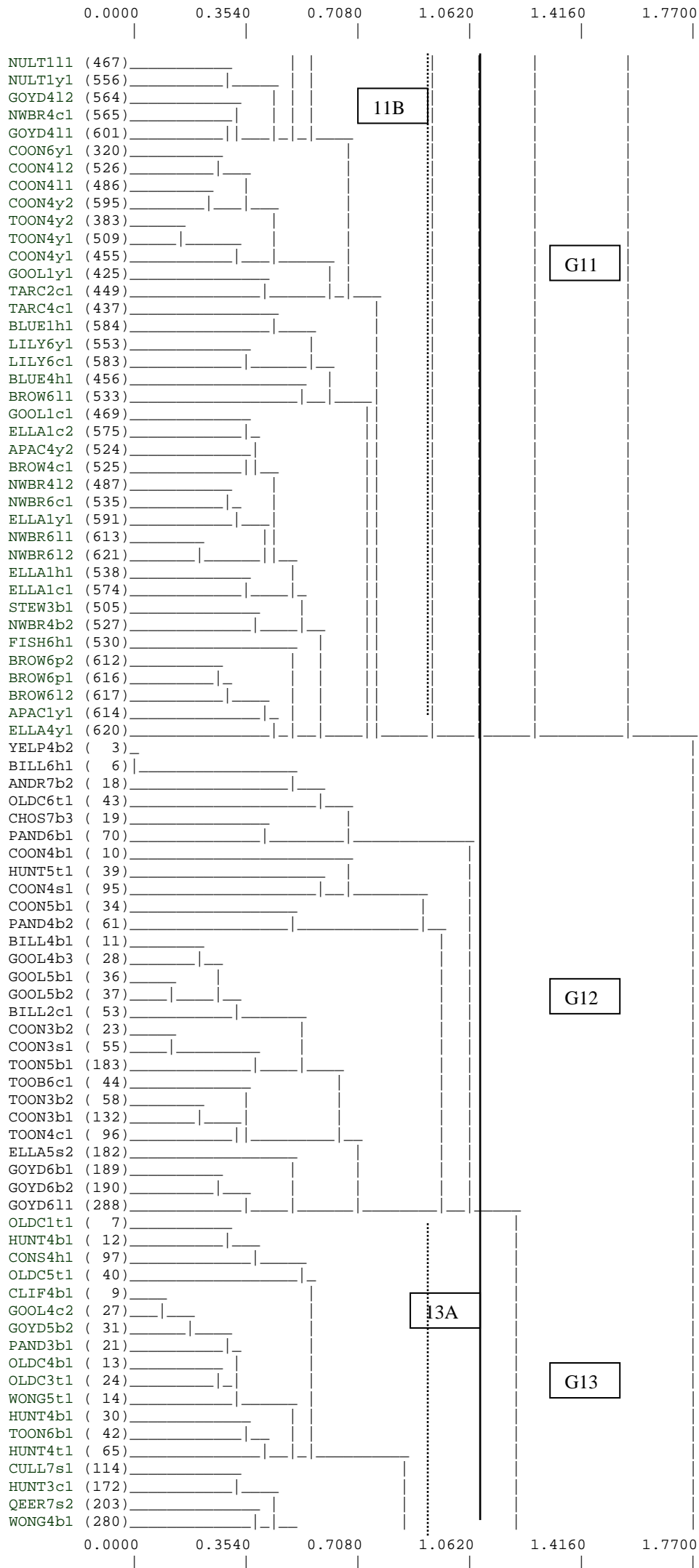


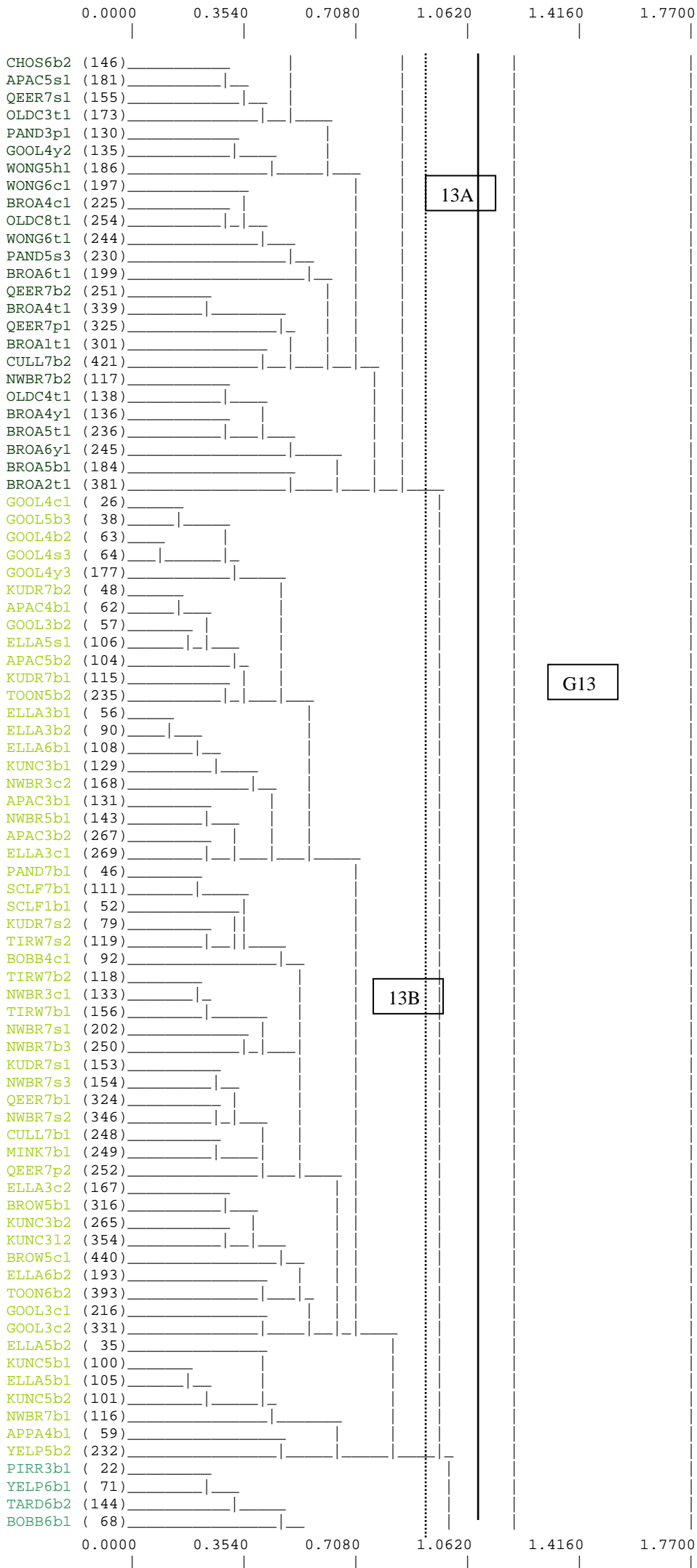








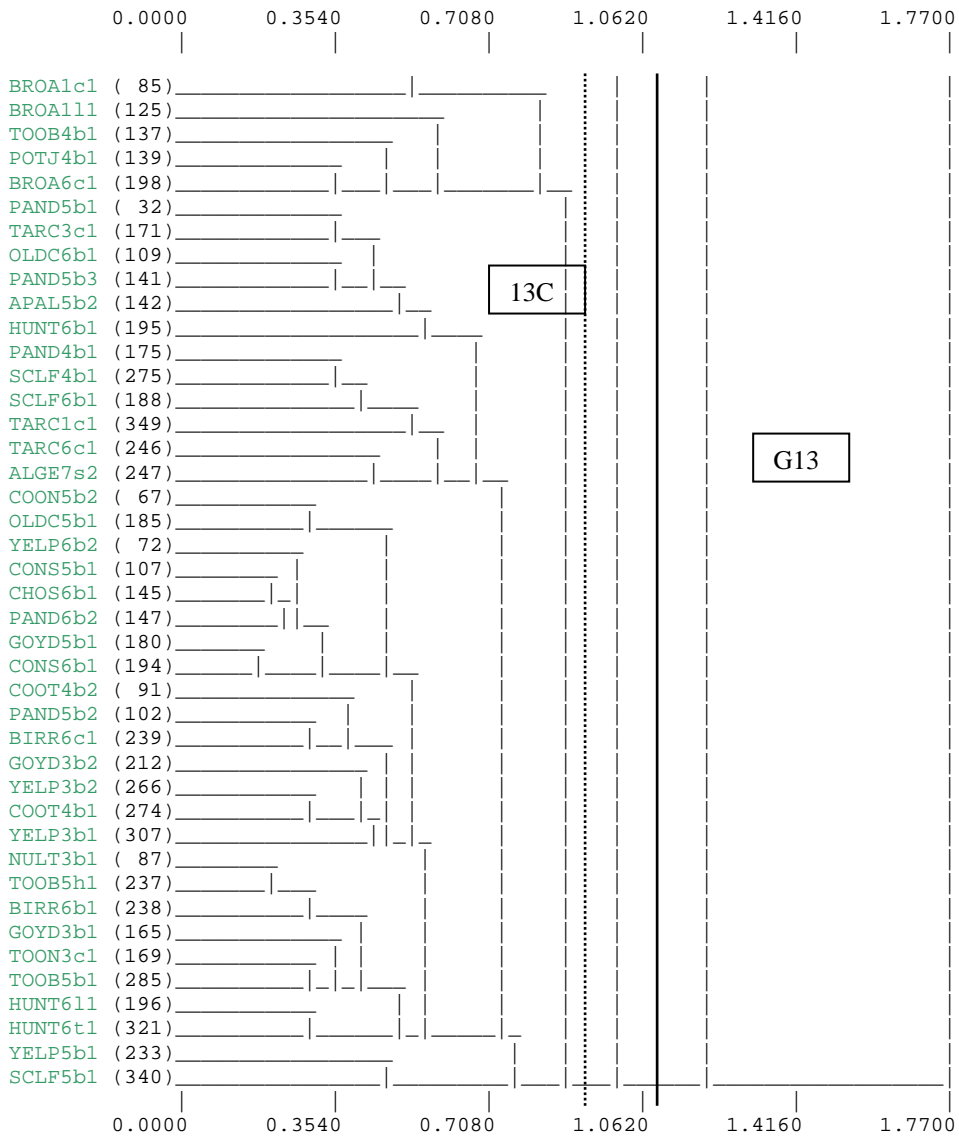




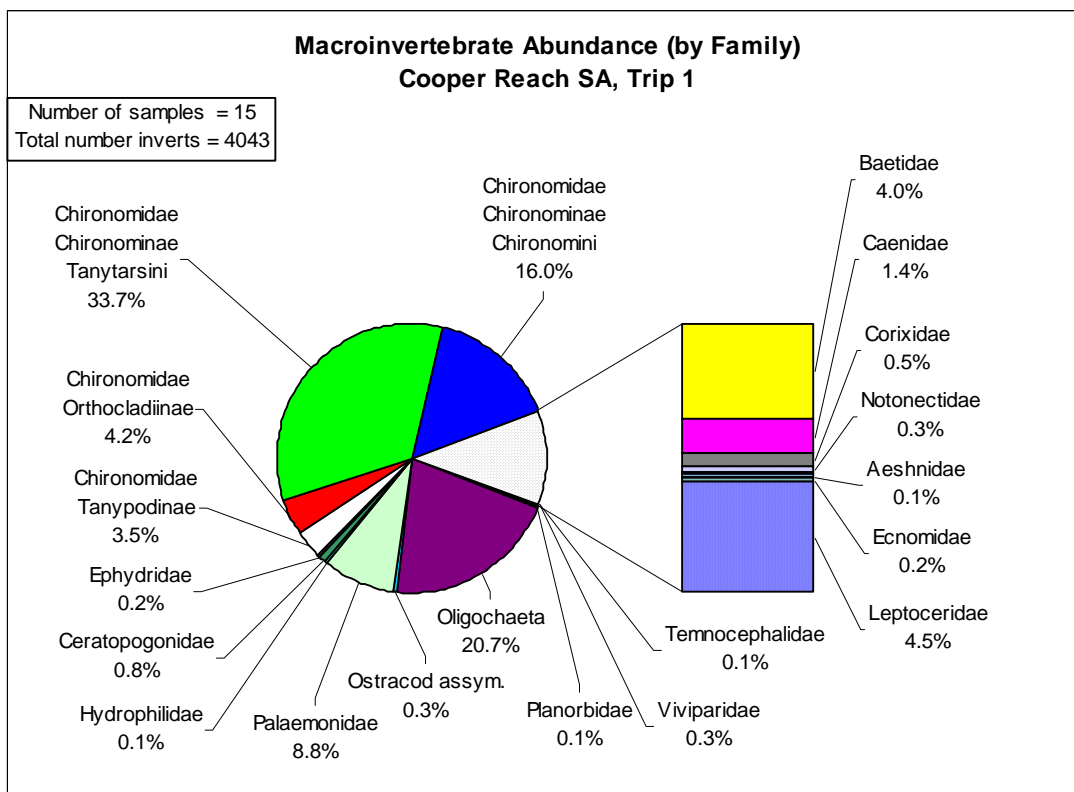
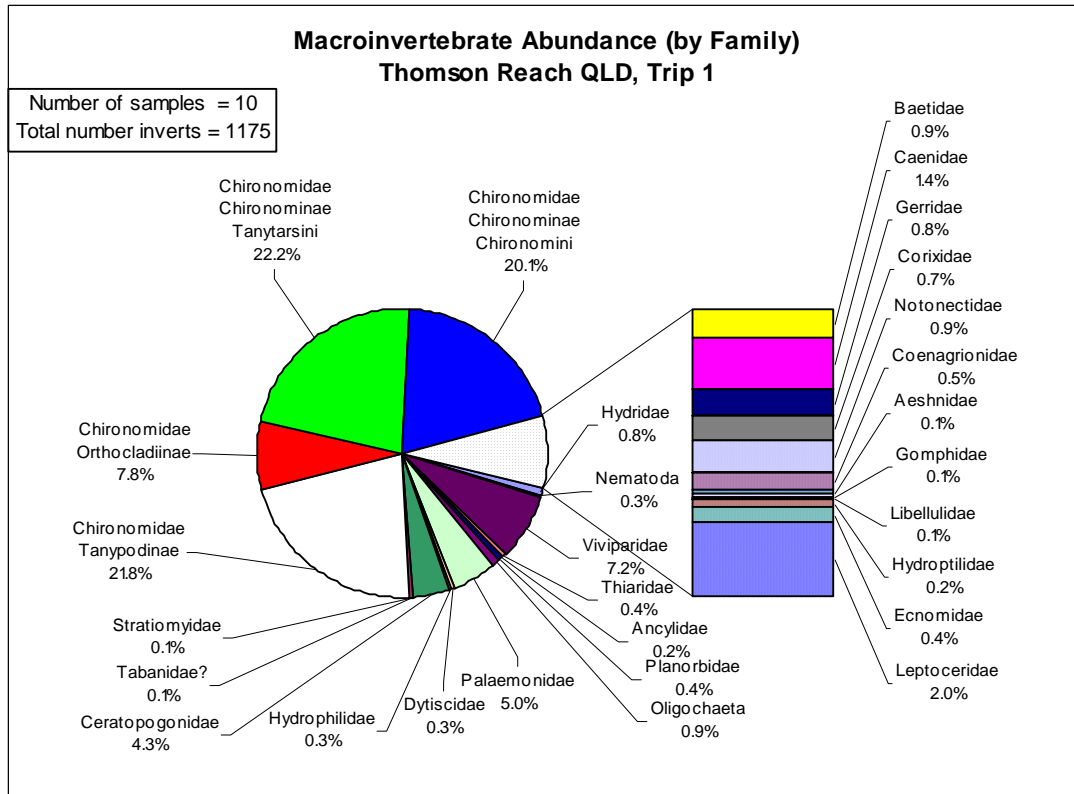
13A

G13

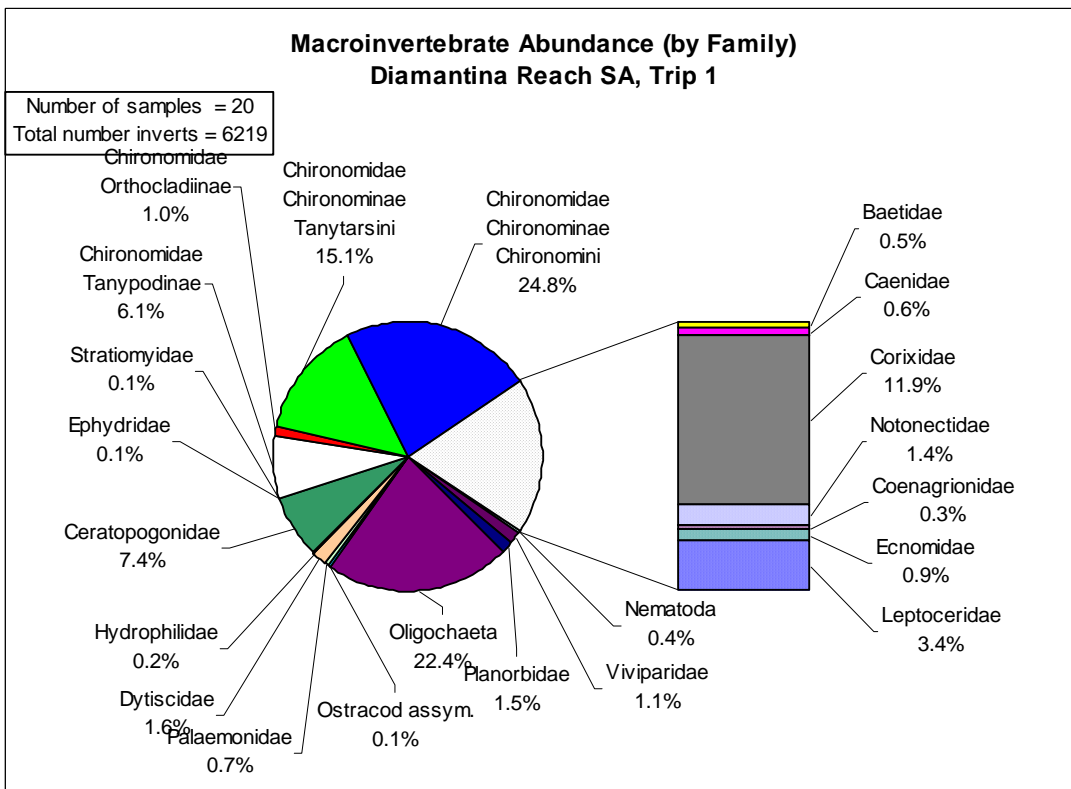
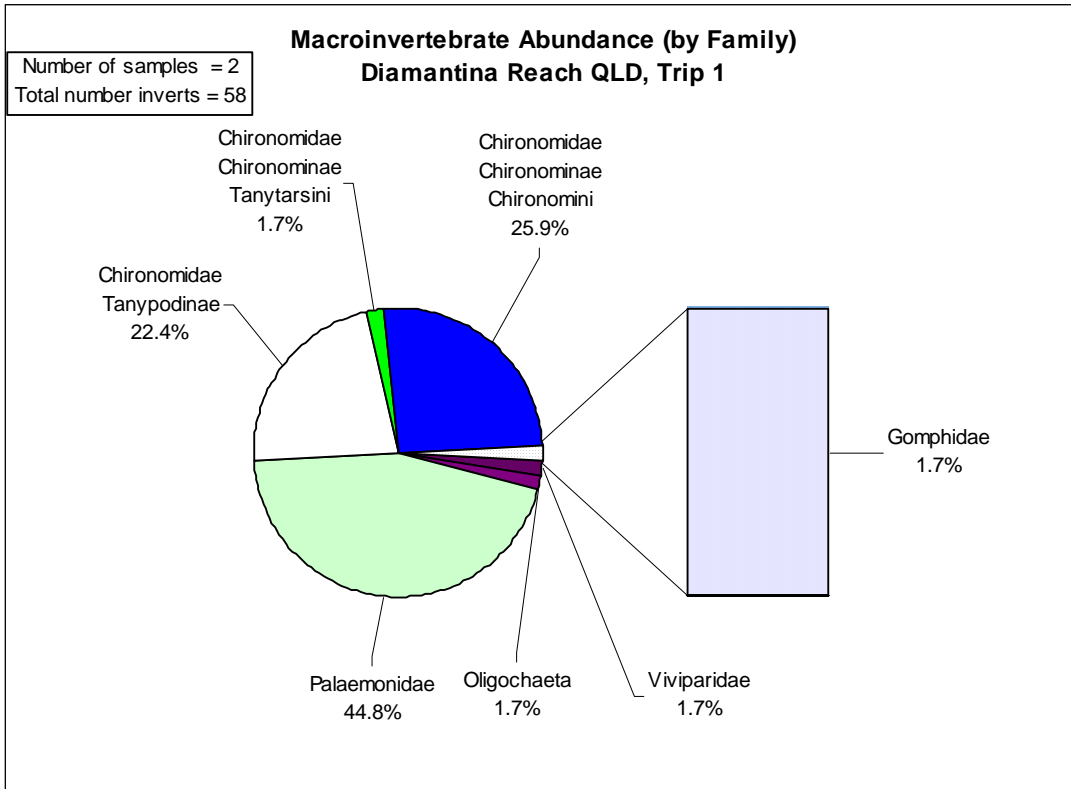
13B



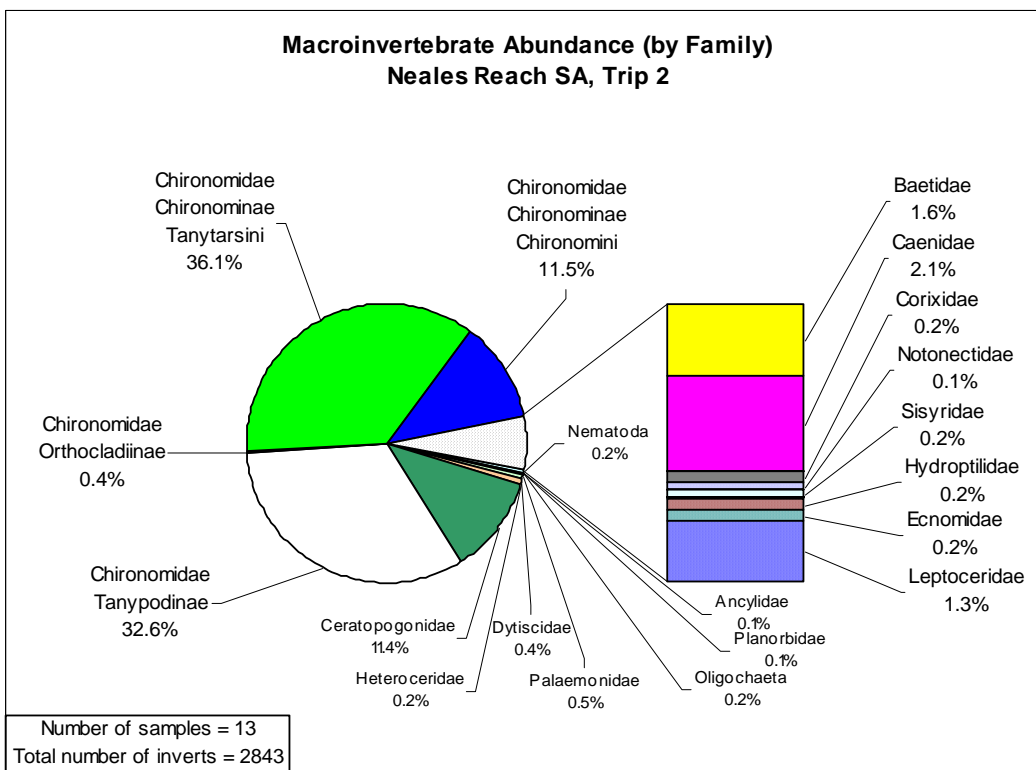
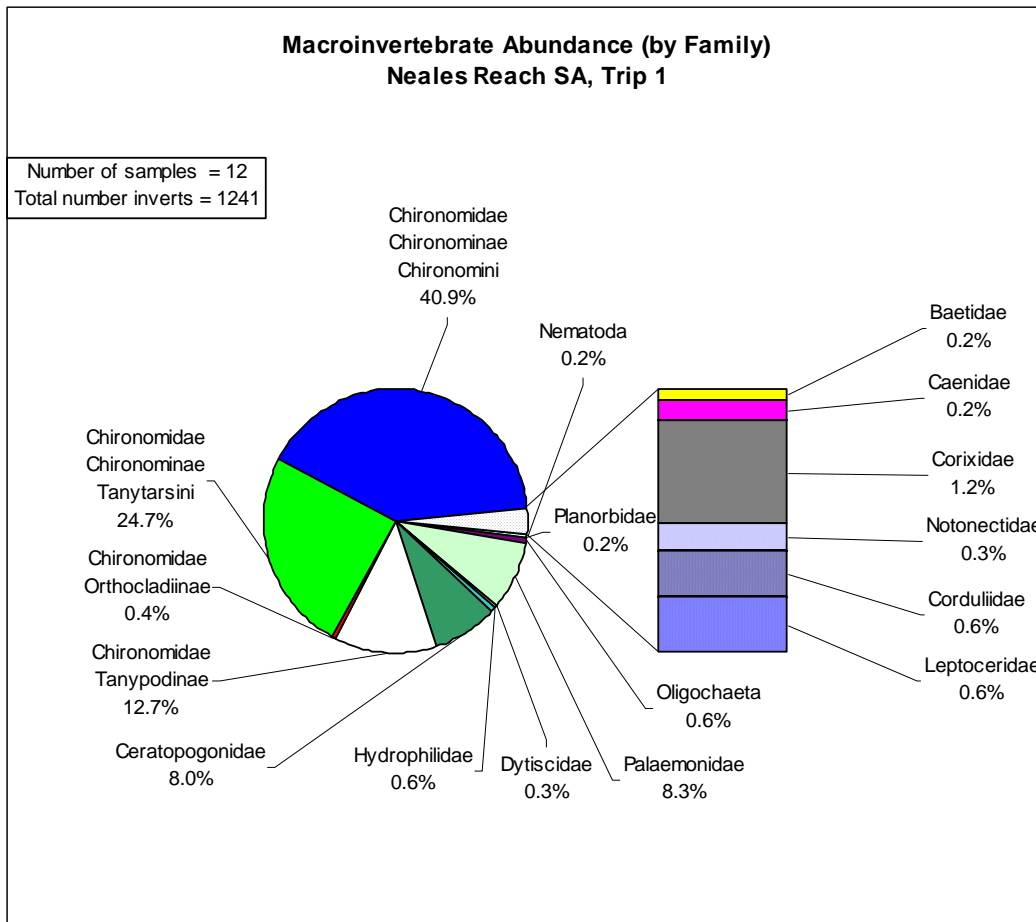
APPENDIX 2C: ABUNDANCE OF ARIDFLO MACROINVERTEBRATE SAMPLES BY FAMILY



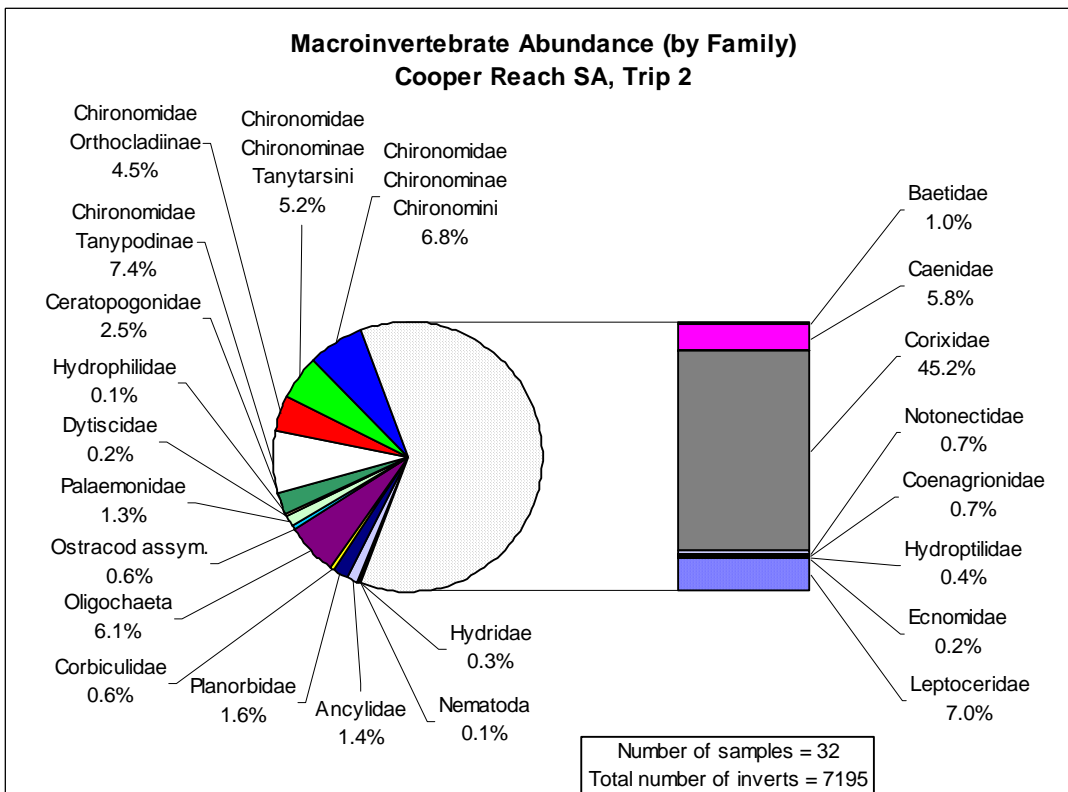
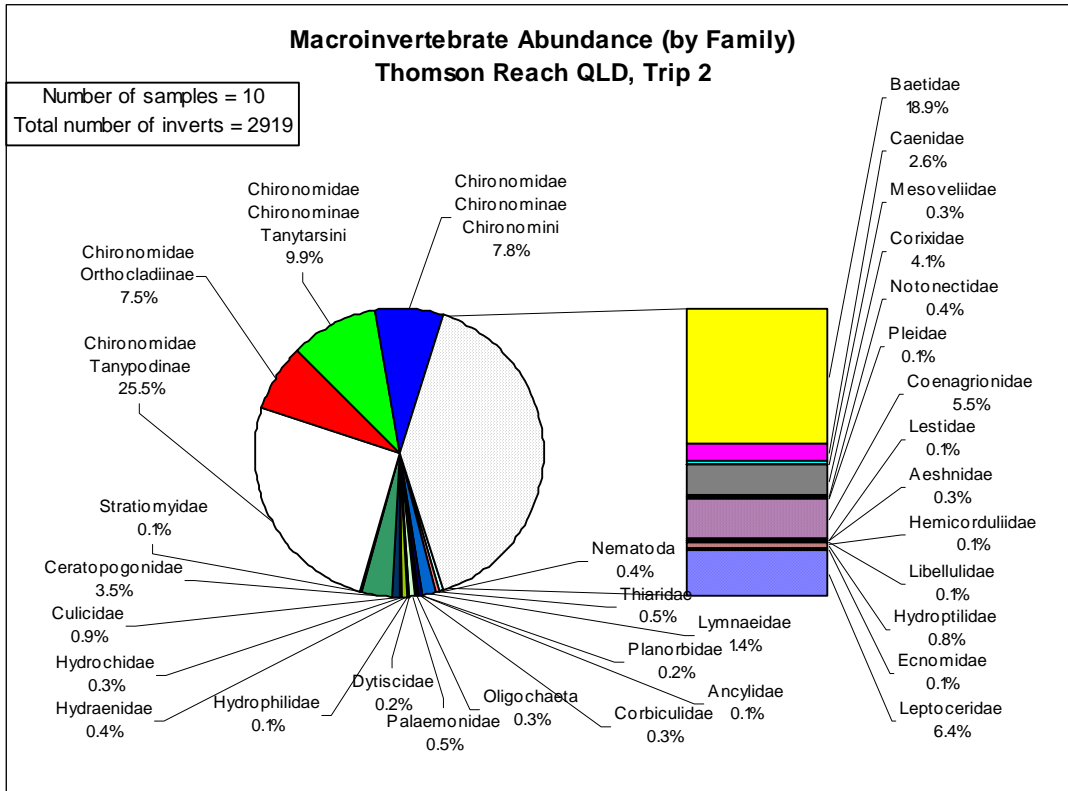
COOPER CREEK ARIDFLO TRIP 1: Generally family abundance shown. Taxa represented if abundance > 0.1%. Taxa have same order of appearance on all plots and the same shading. Bar on the right relates to mayflies, true bugs, dragonflies, damselflies and caddises. All other taxa are in the pie on the left.



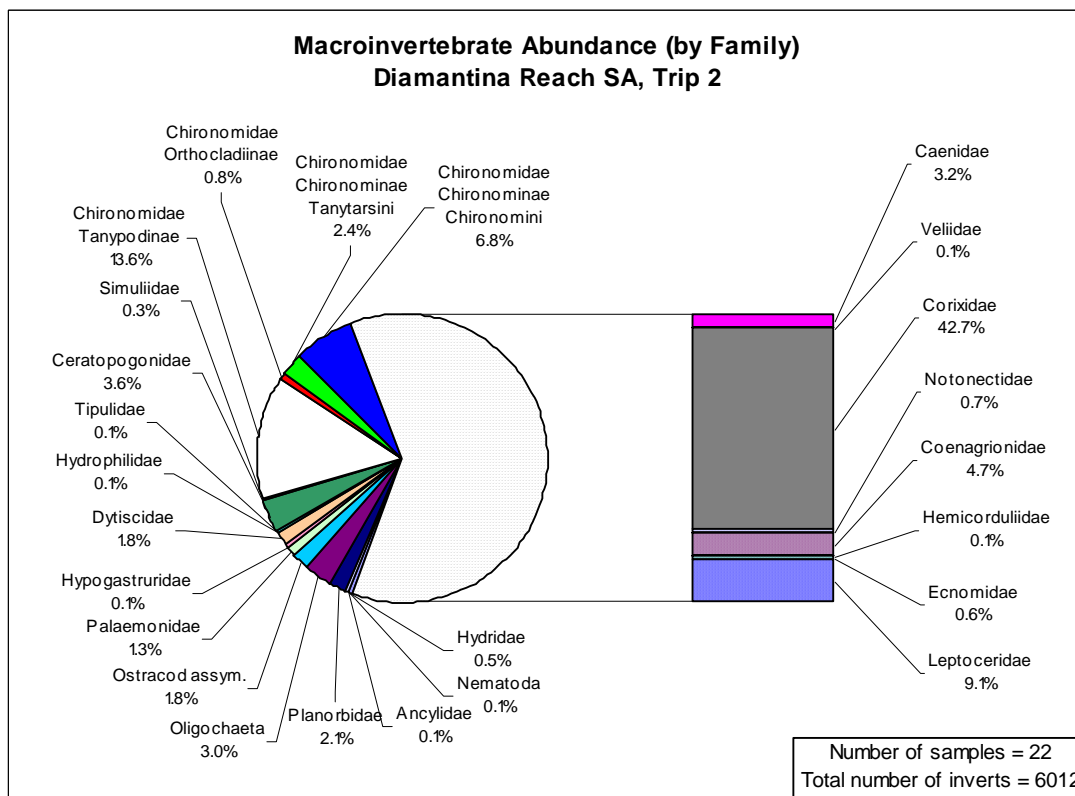
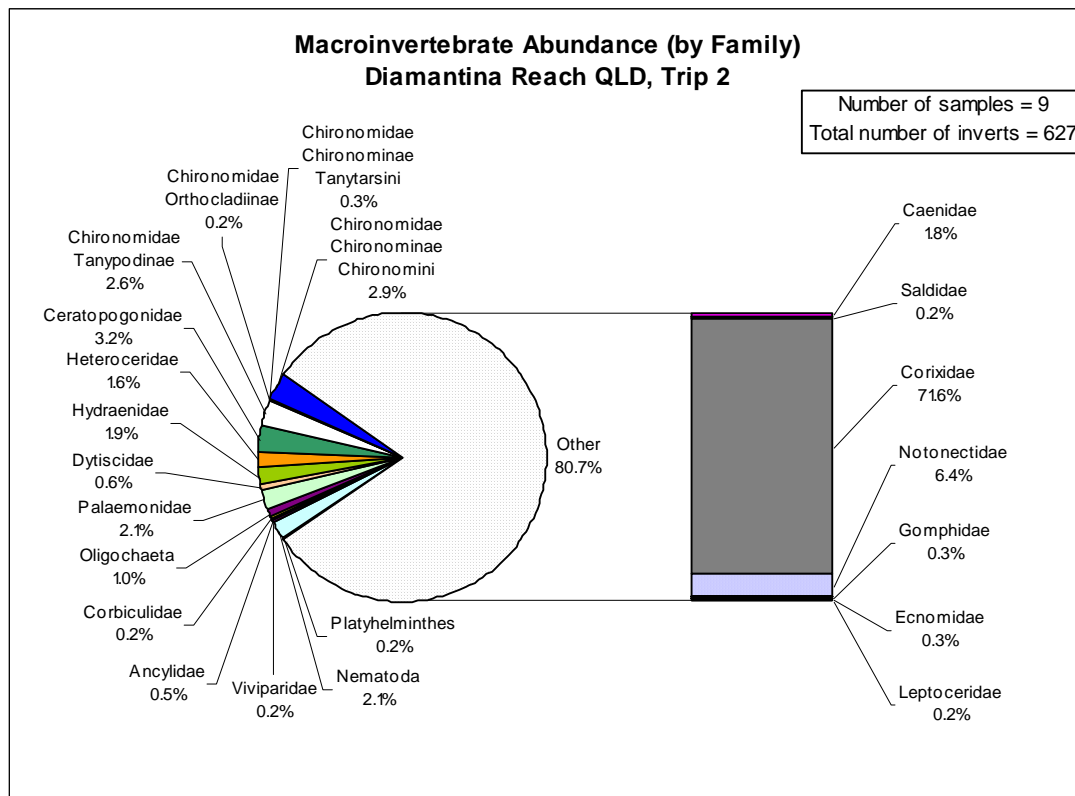
DIAMANTINA RIVER ARIDFLO TRIP 1: Generally family abundance shown. Taxa represented if abundance > 0.1%. Taxa have same order of appearance on all plots and the same shading. Bar on the right relates to mayflies, true bugs, dragonflies, damselflies and caddises. All other taxa are in the pie on the left.



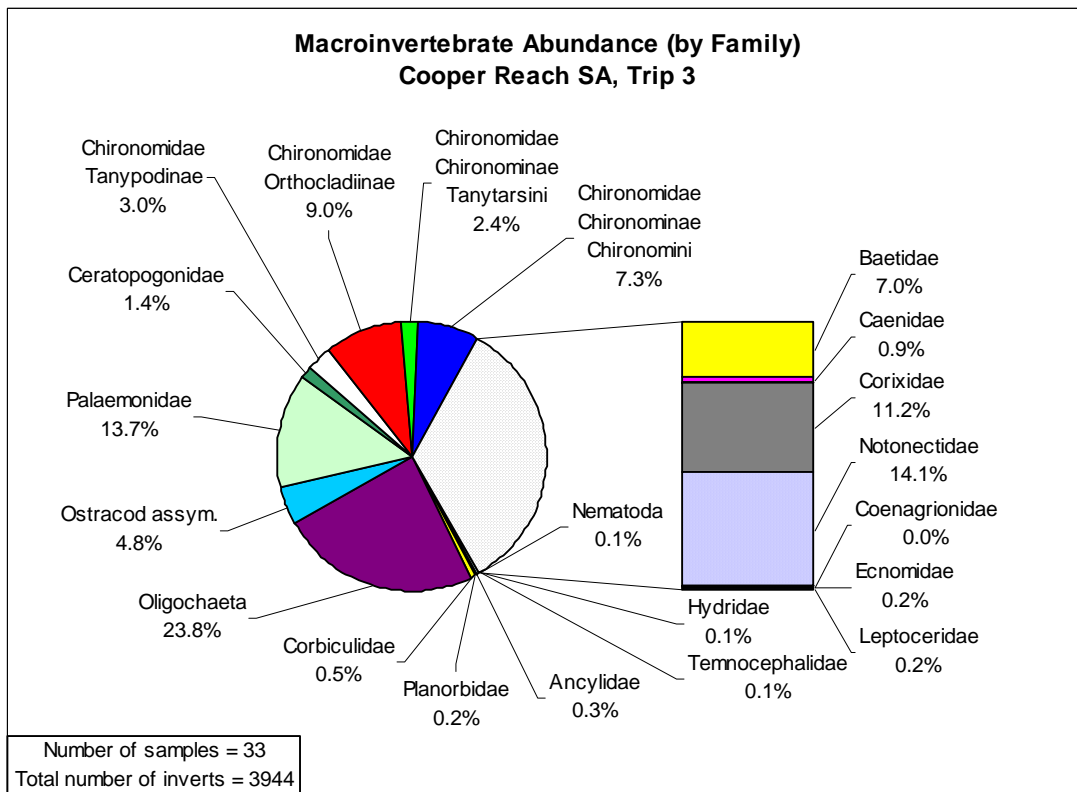
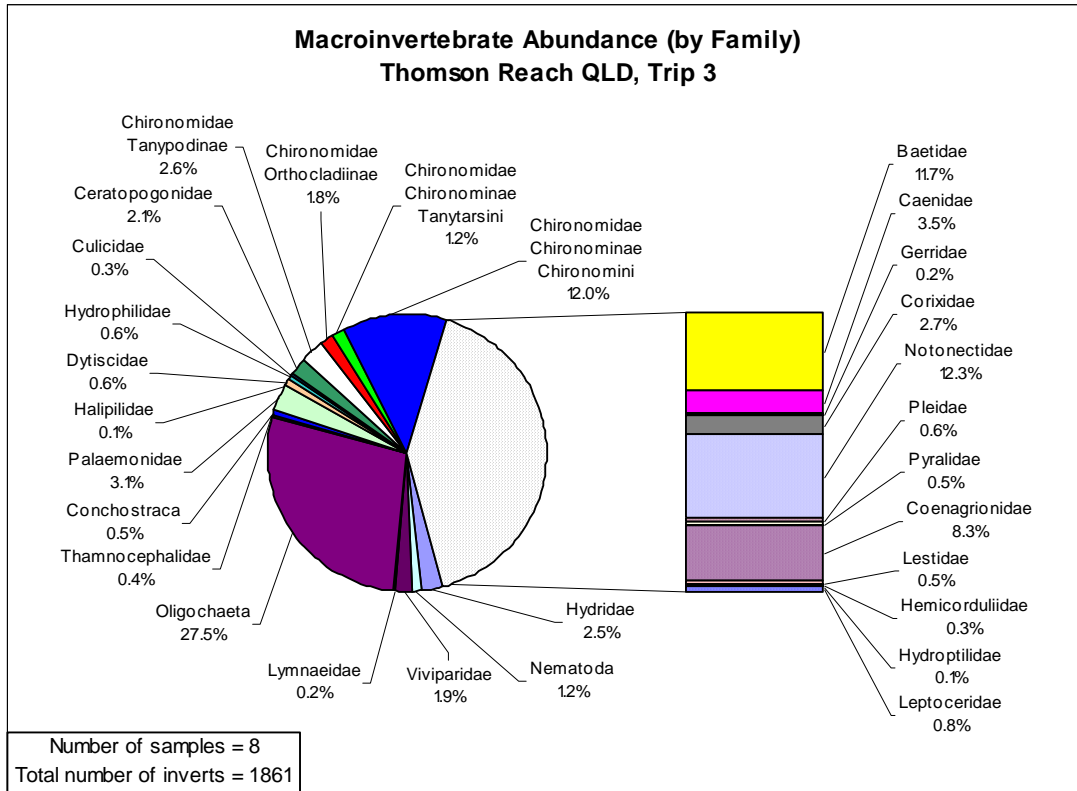
NEALES RIVER ARIDFLO TRIPS 1 & 2: Generally family abundance shown. Taxa represented if abundance > 0.1%. Taxa have same order of appearance on all plots and the same shading. Bar on the right relates to mayflies, true bugs, dragonflies, damselflies and caddises. All other taxa are in the pie on the left.



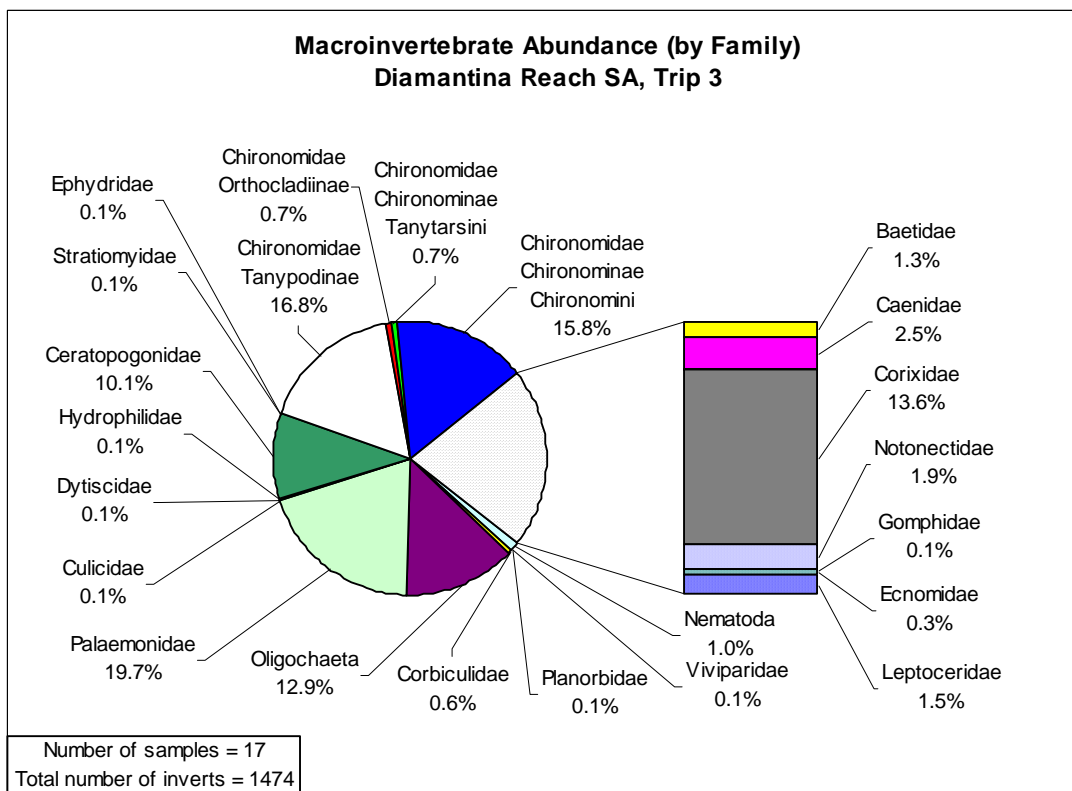
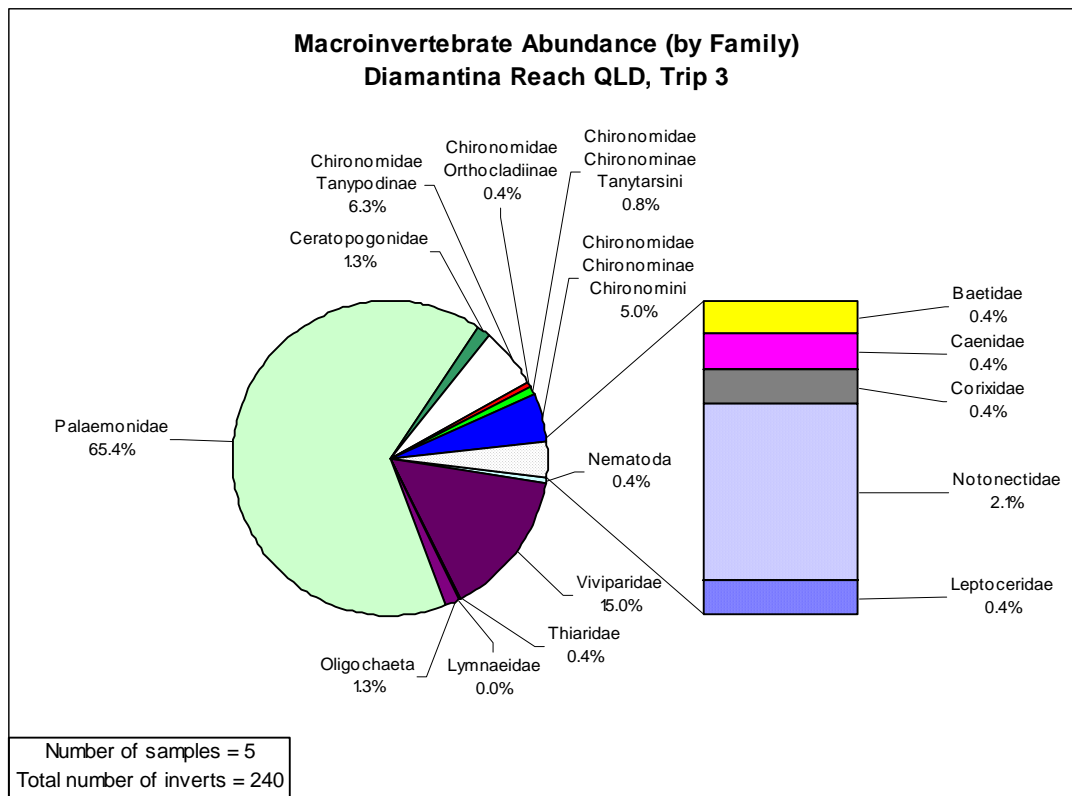
COOPER CREEK ARIDFLO TRIP 2: Generally family abundance shown. Taxa represented if abundance > 0.1%. Taxa have same order of appearance on all plots and the same shading. Bar on the right relates to mayflies, true bugs, dragonflies, damselflies and caddises. All other taxa are in the pie on the left.



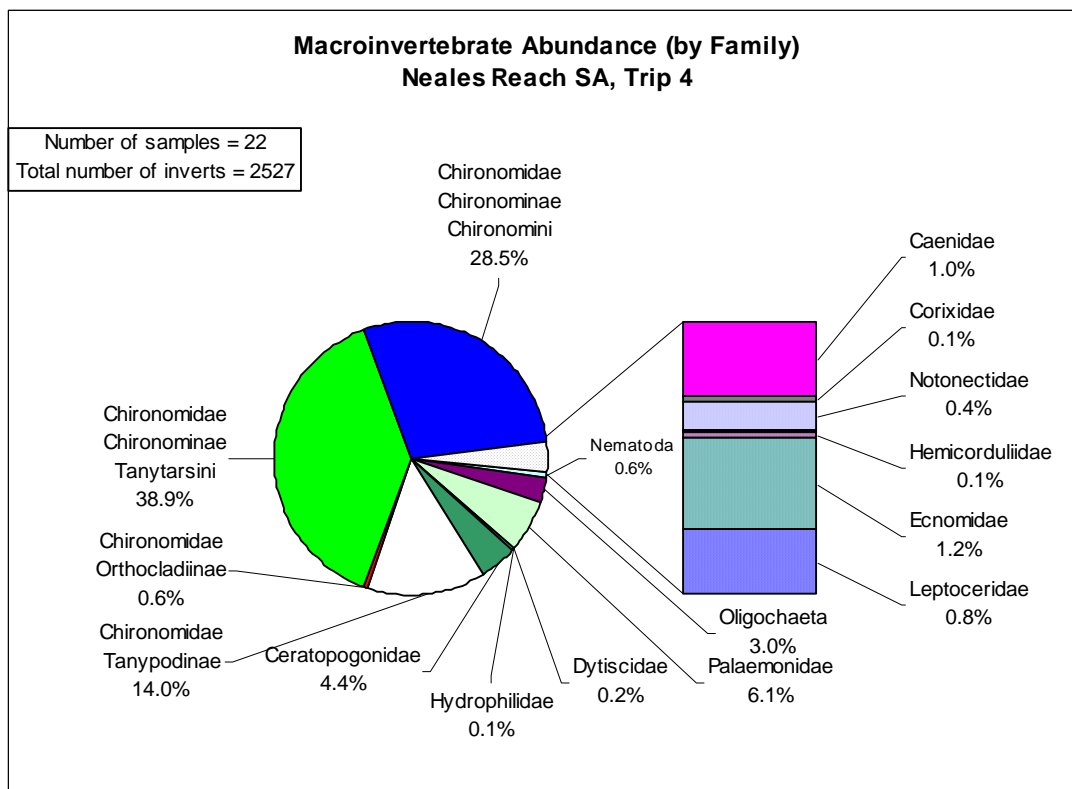
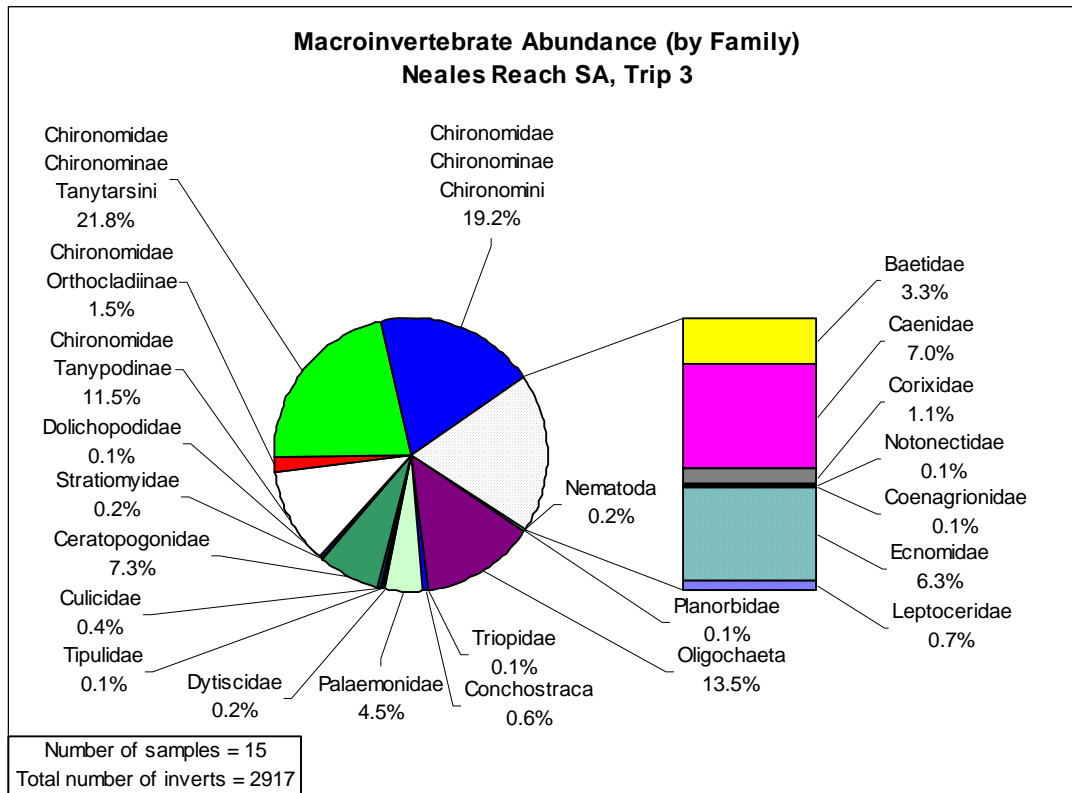
DIAMANTINA RIVER ARIDFLO TRIP 2: Generally family abundance shown. Taxa represented if abundance > 0.1%. Taxa have same order of appearance on all plots and the same shading. Bar on the right relates to mayflies, true bugs, dragonflies, damselflies and caddises. All other taxa are in the pie on the left.



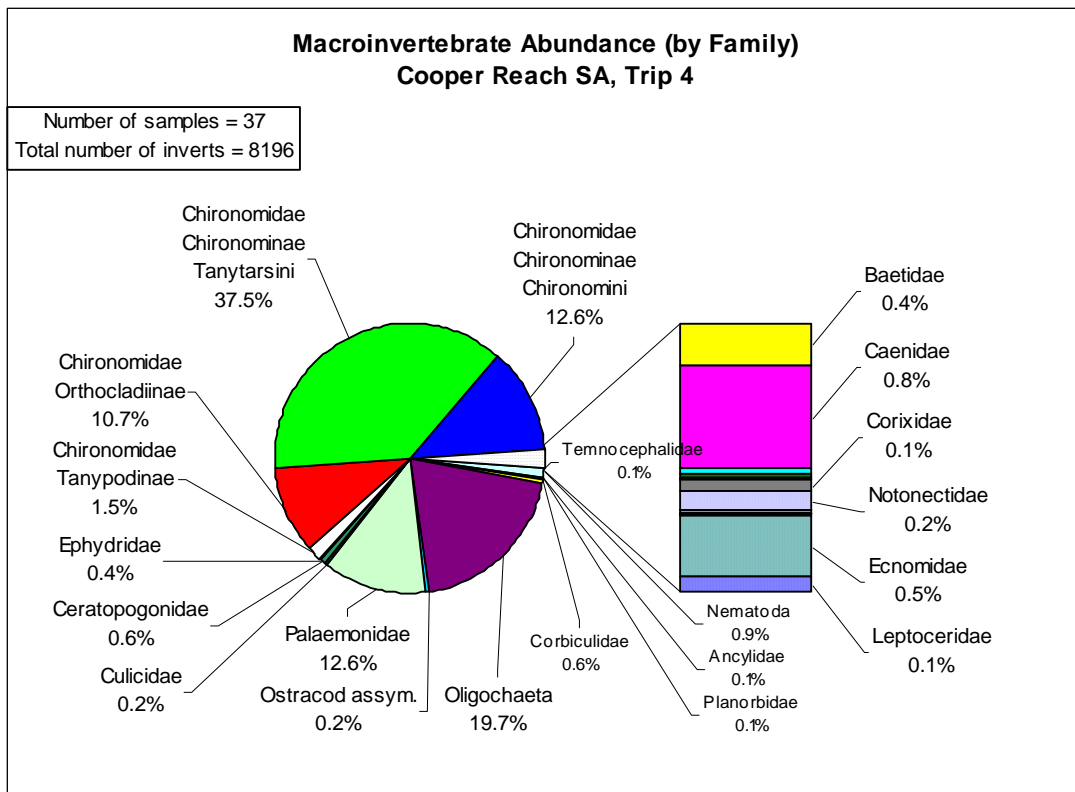
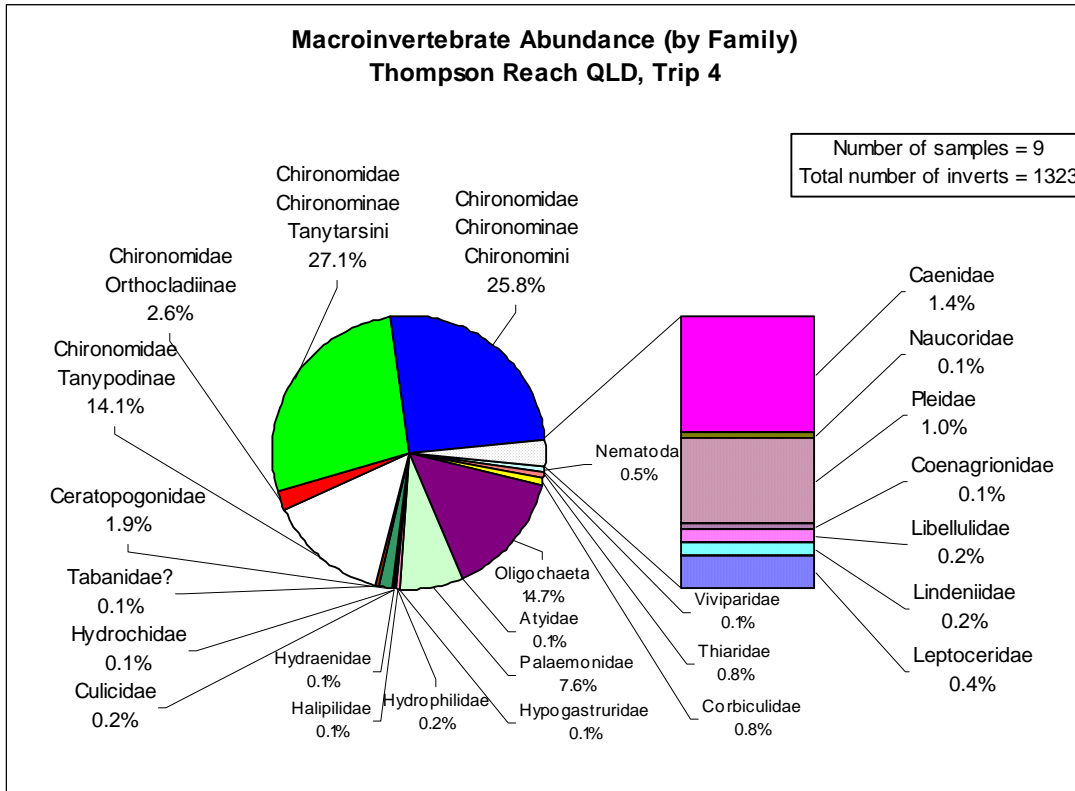
COOPER CREEK ARIDFLO TRIP 3: Generally family abundance shown. Taxa represented if abundance > 0.1%. Taxa have same order of appearance on all plots and the same shading. Bar on the right relates to mayflies, true bugs, dragonflies, damselflies and caddises. All other taxa are in the pie on the left.



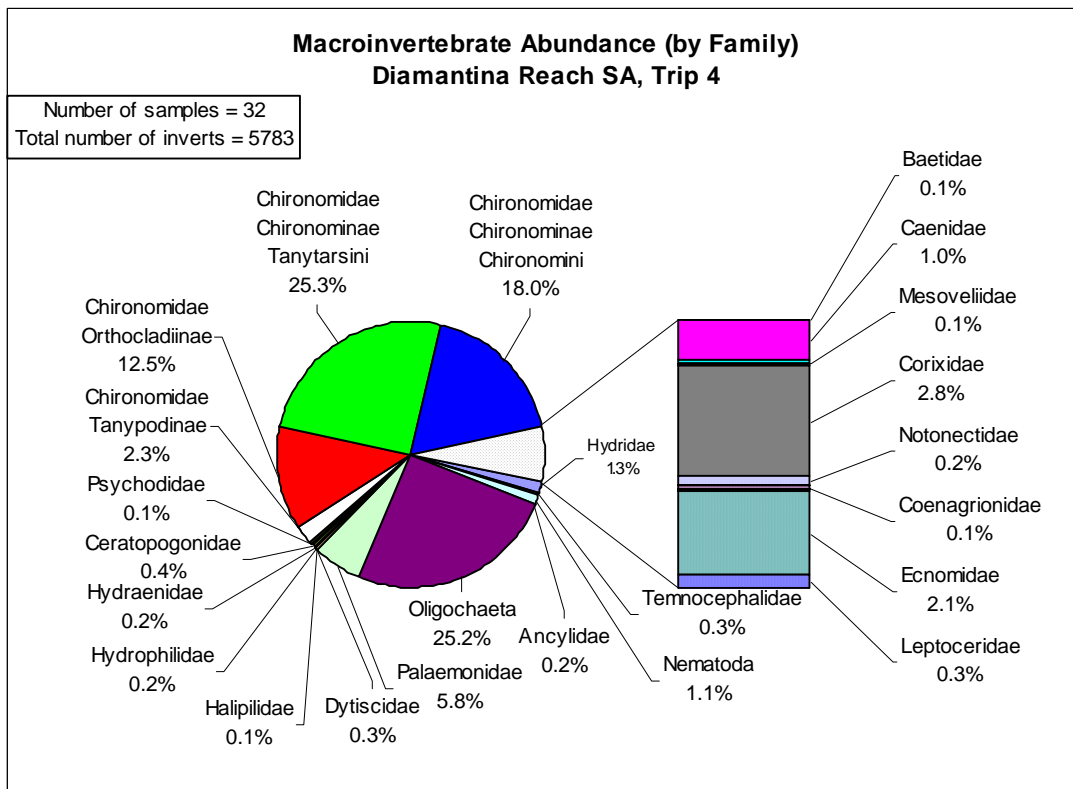
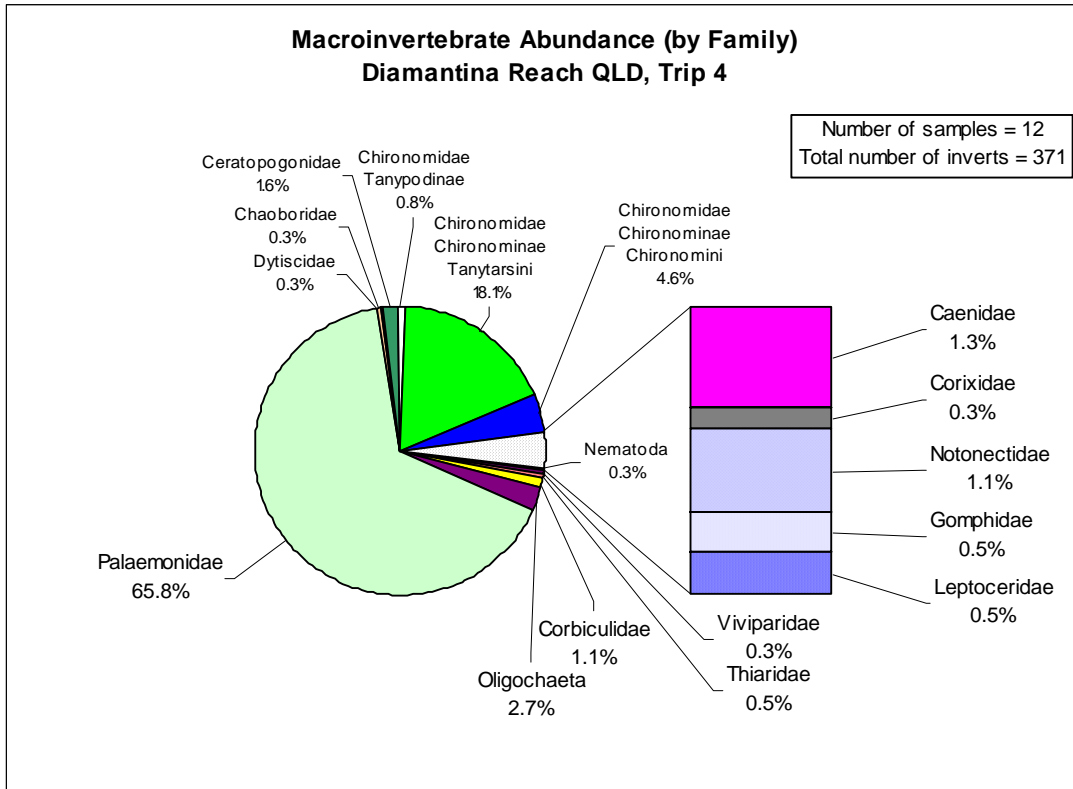
DIAMANTINA RIVER ARIDFLO TRIP 3: Generally family abundance shown. Taxa represented if abundance > 0.1%. Taxa have same order of appearance on all plots and the same shading. Bar on the right relates to mayflies, true bugs, dragonflies, damselflies and caddises. All other taxa are in the pie on the left.



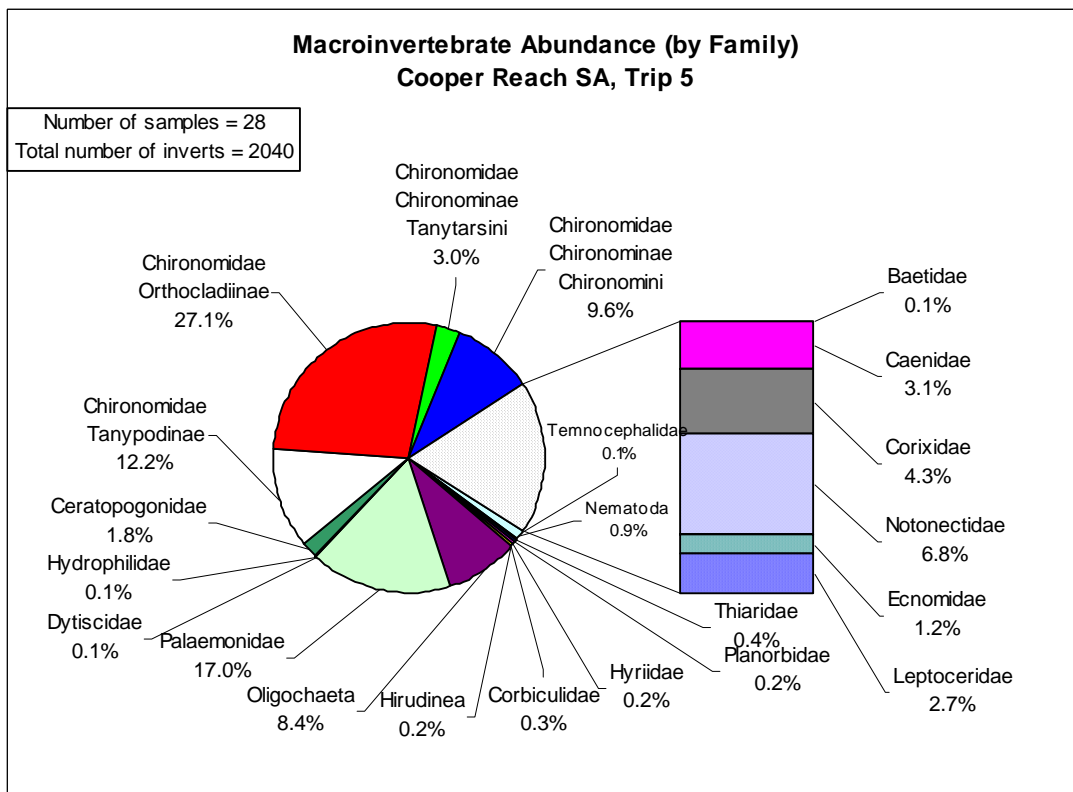
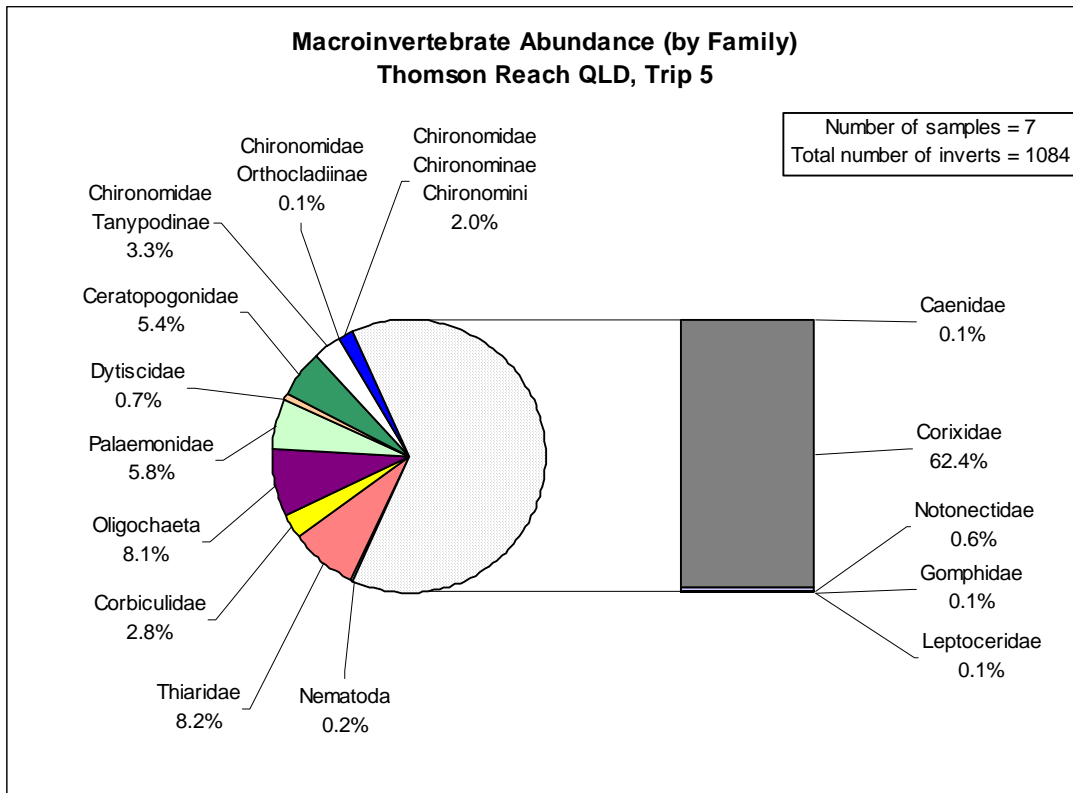
NEALES RIVER ARIDFLO TRIPS 3 & 4: Generally family abundance shown. Taxa represented if abundance > 0.1%. Taxa have same order of appearance on all plots and the same shading. Bar on the right relates to mayflies, true bugs, dragonflies, damselflies and caddises. All other taxa are in the pie on the left.



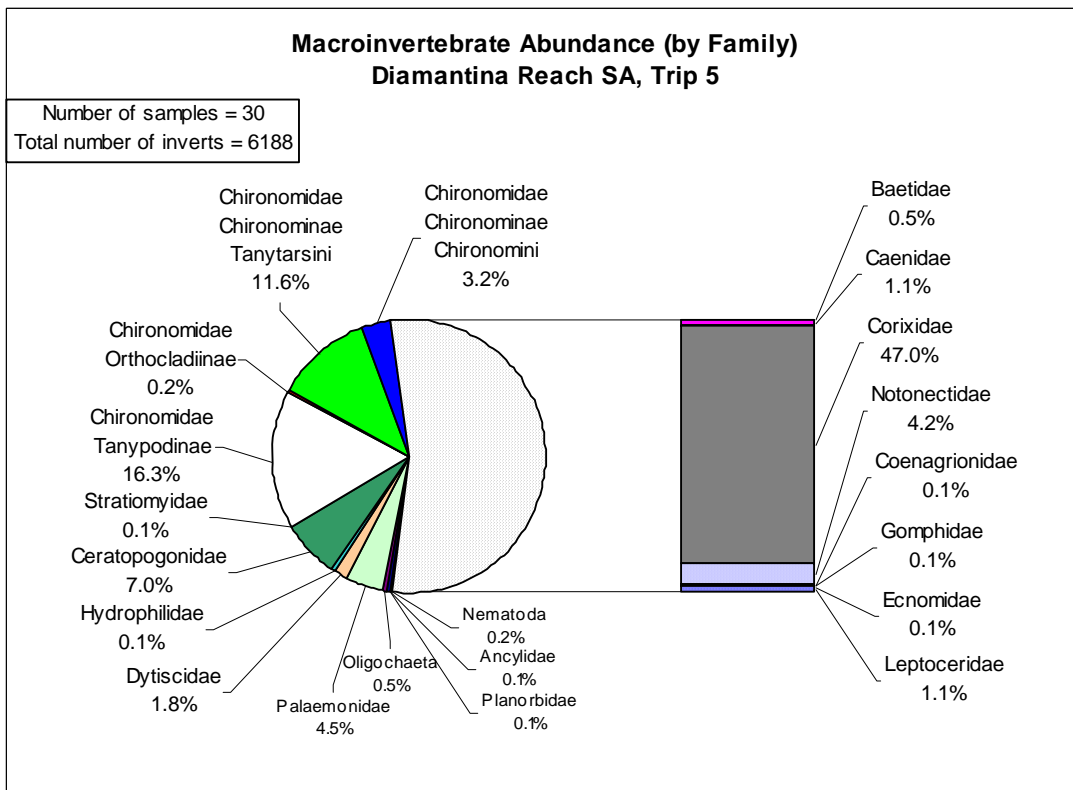
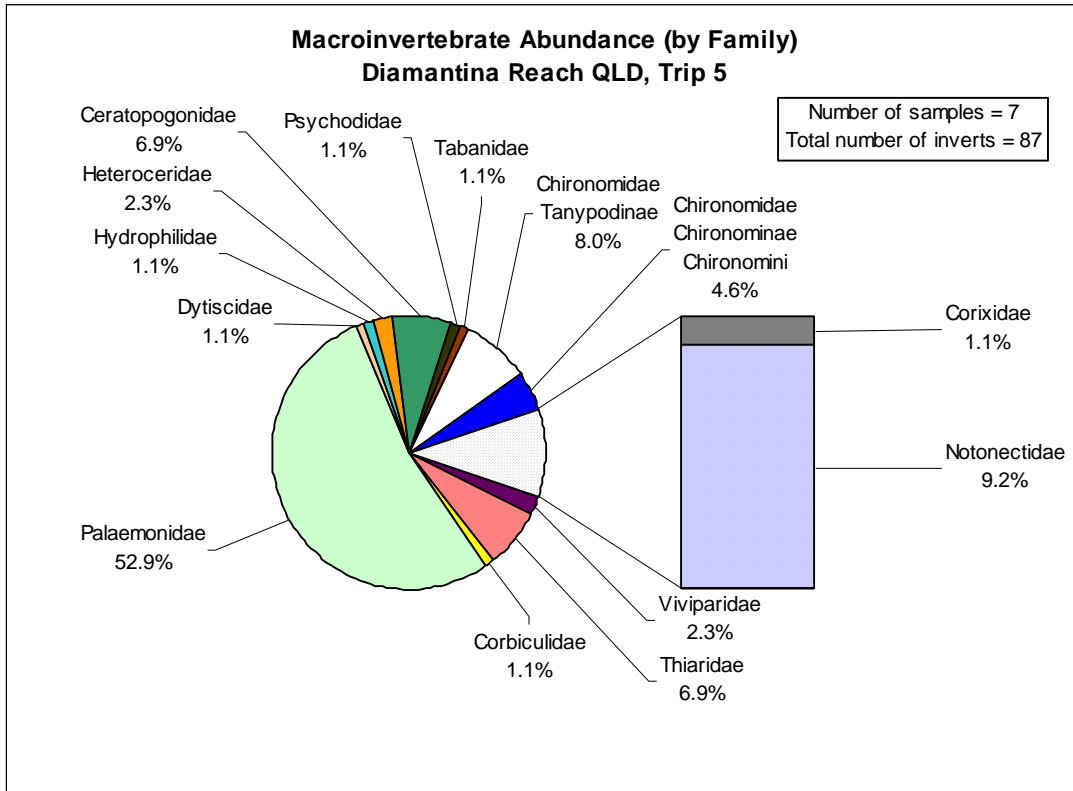
COOPER CREEK ARIDFLO TRIP 4: Generally family abundance shown. Taxa represented if abundance > 0.1%. Taxa have same order of appearance on all plots and the same shading. Bar on the right relates to mayflies, true bugs, dragonflies, damselflies and caddises. All other taxa are in the pie on the left.



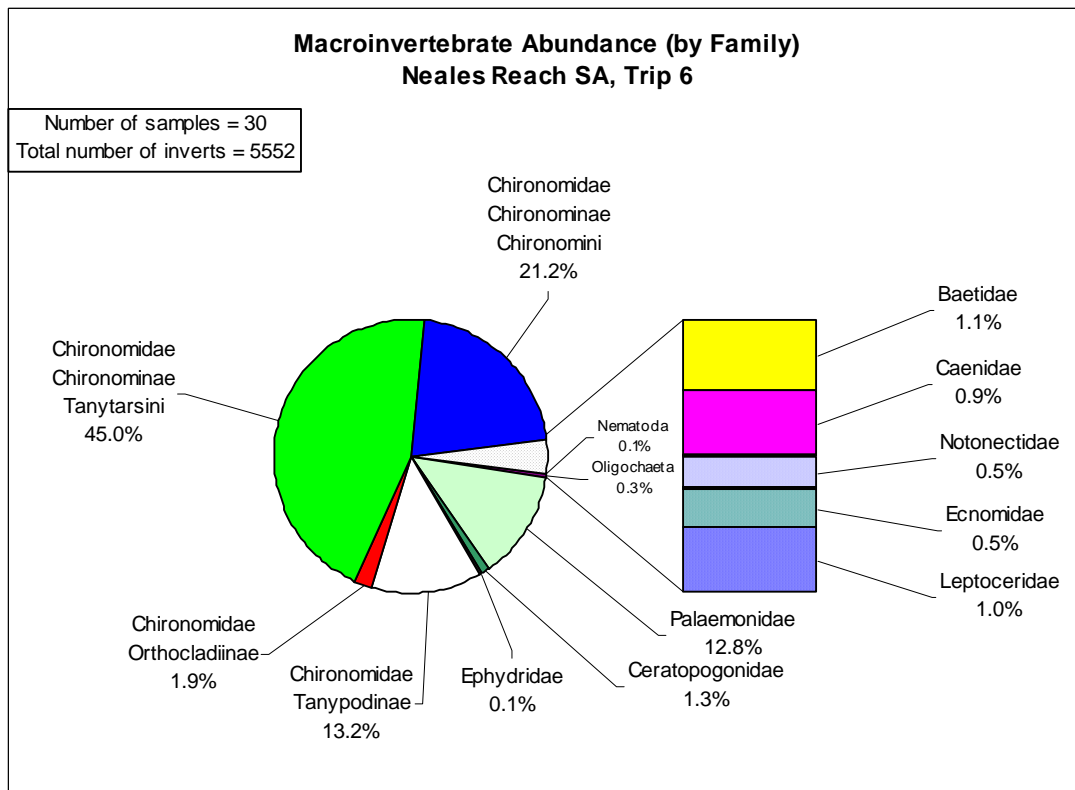
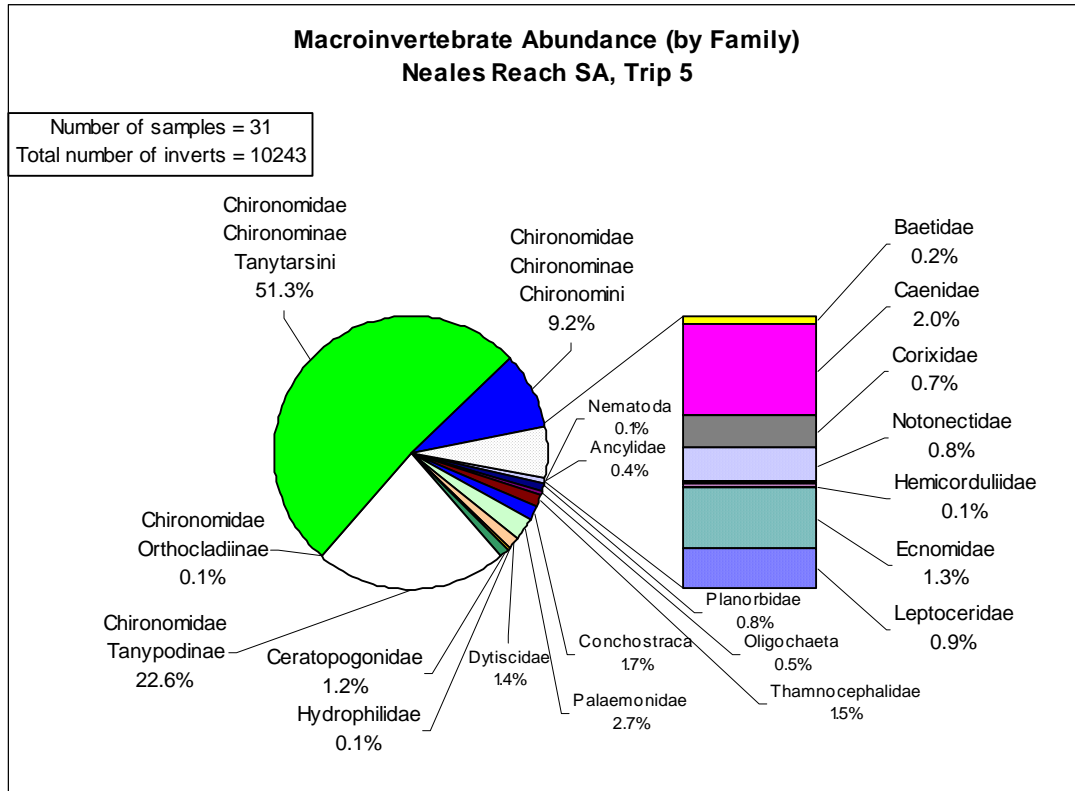
DIAMANTINA RIVER ARIDFLO TRIP 4: Generally family abundance shown. Taxa represented if abundance > 0.1%. Taxa have same order of appearance on all plots and the same shading. Bar on the right relates to mayflies, true bugs, dragonflies, damselflies and caddises. All other taxa are in the pie on the left.



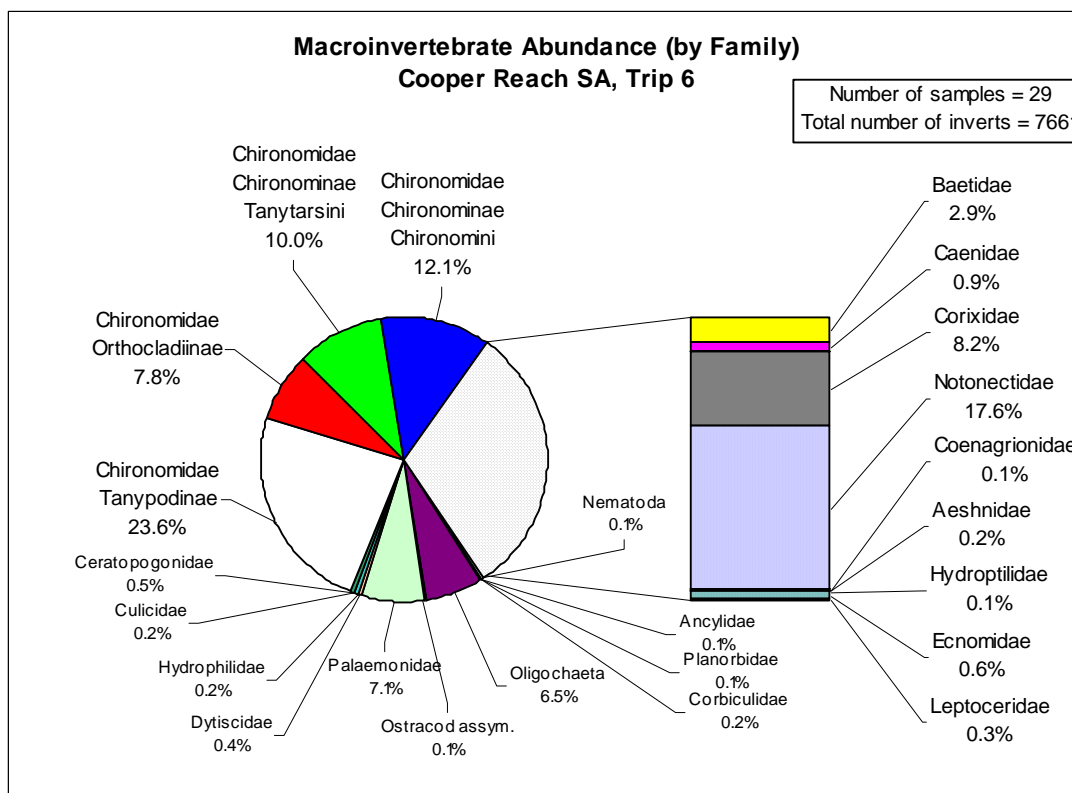
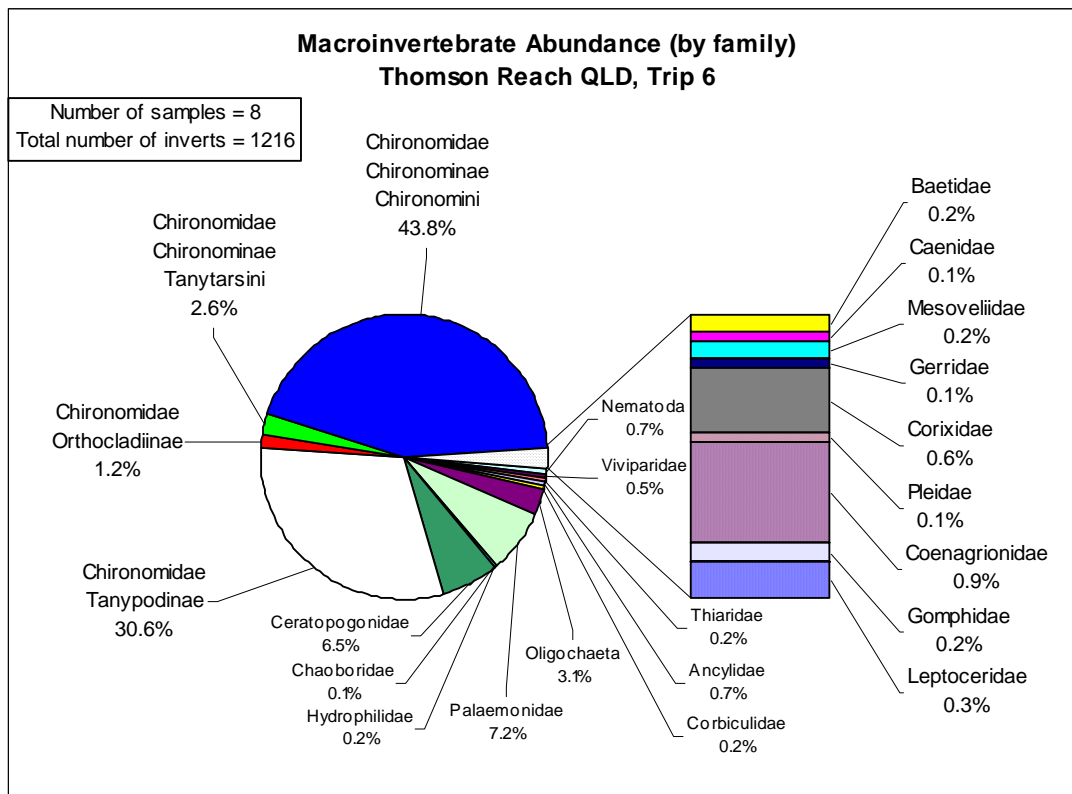
COOPER CREEK ARIDFLO TRIP 5: Generally family abundance shown. Taxa represented if abundance > 0.1%. Taxa have same order of appearance on all plots and the same shading. Bar on the right relates to mayflies, true bugs, dragonflies, damselflies and caddises. All other taxa are in the pie on the left.



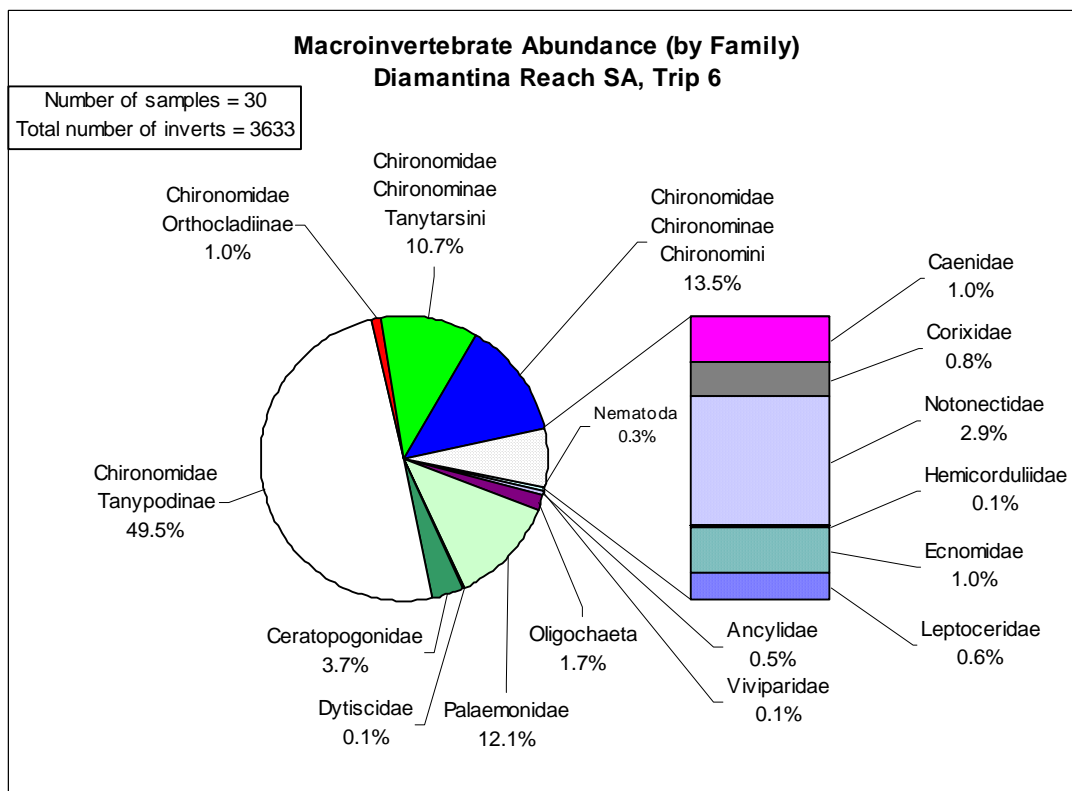
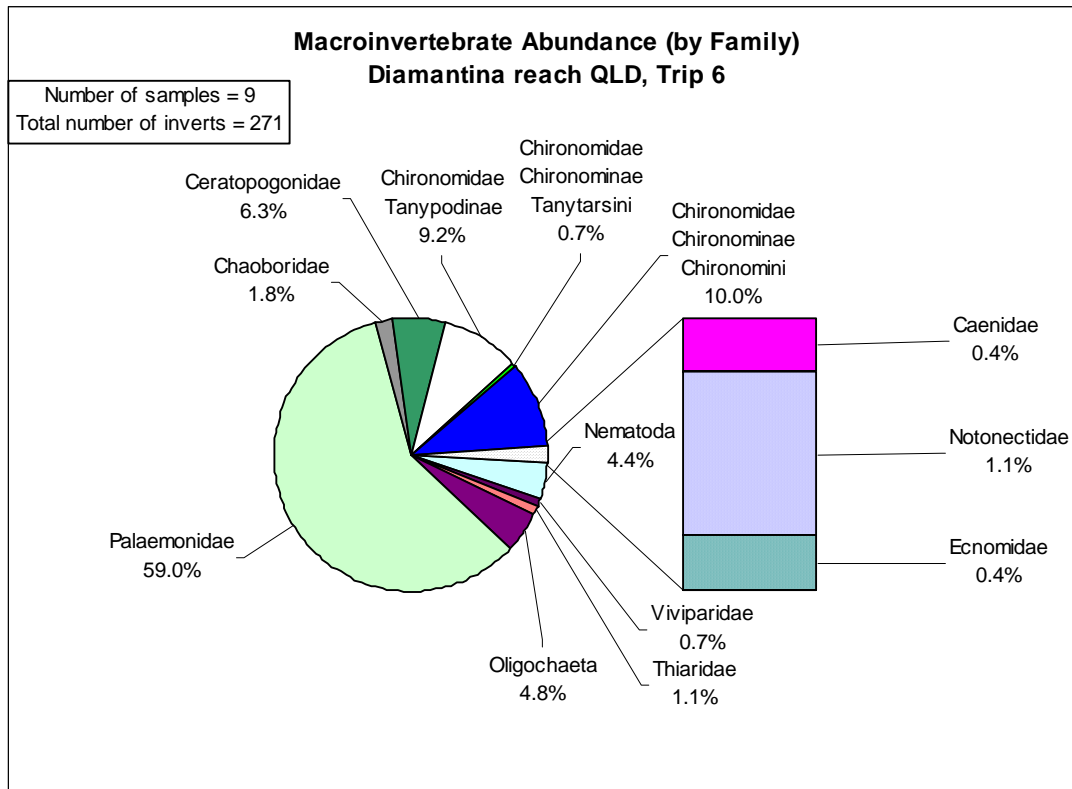
DIAMANTINA RIVER ARIDFLO TRIP 5: Generally family abundance shown. Taxa represented if abundance > 0.1%. Taxa have same order of appearance on all plots and the same shading. Bar on the right relates to mayflies, true bugs, dragonflies, damselflies and caddises. All other taxa are in the pie on the left.



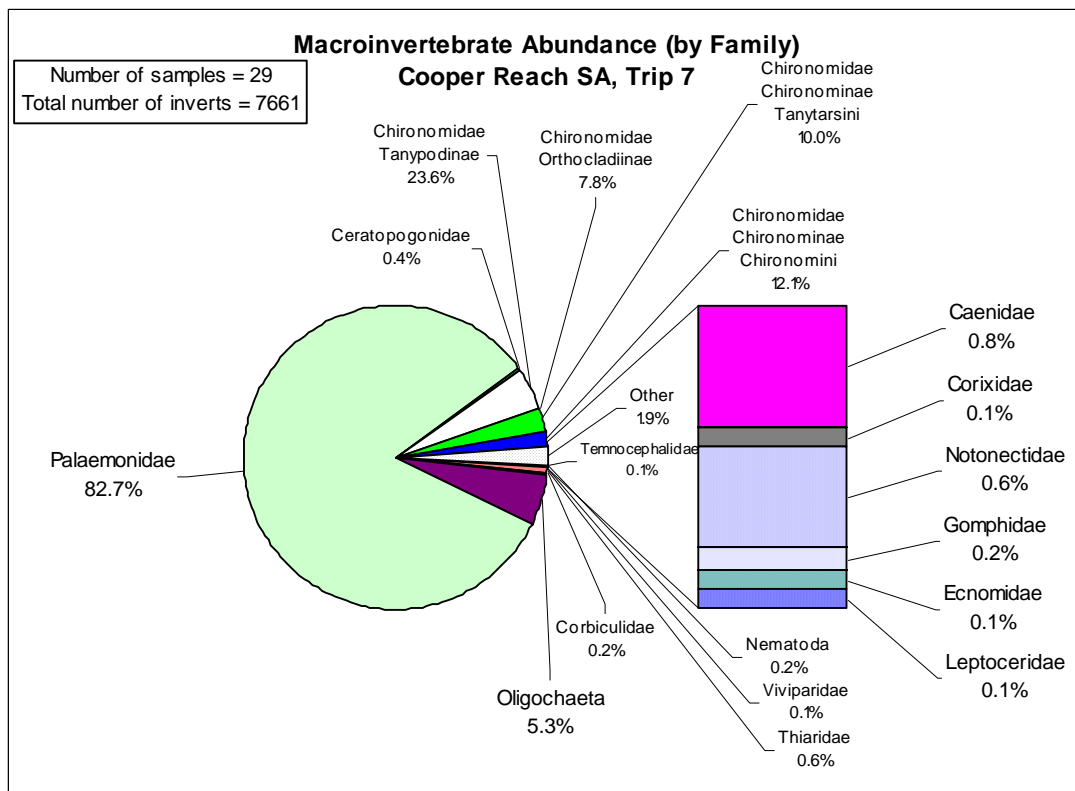
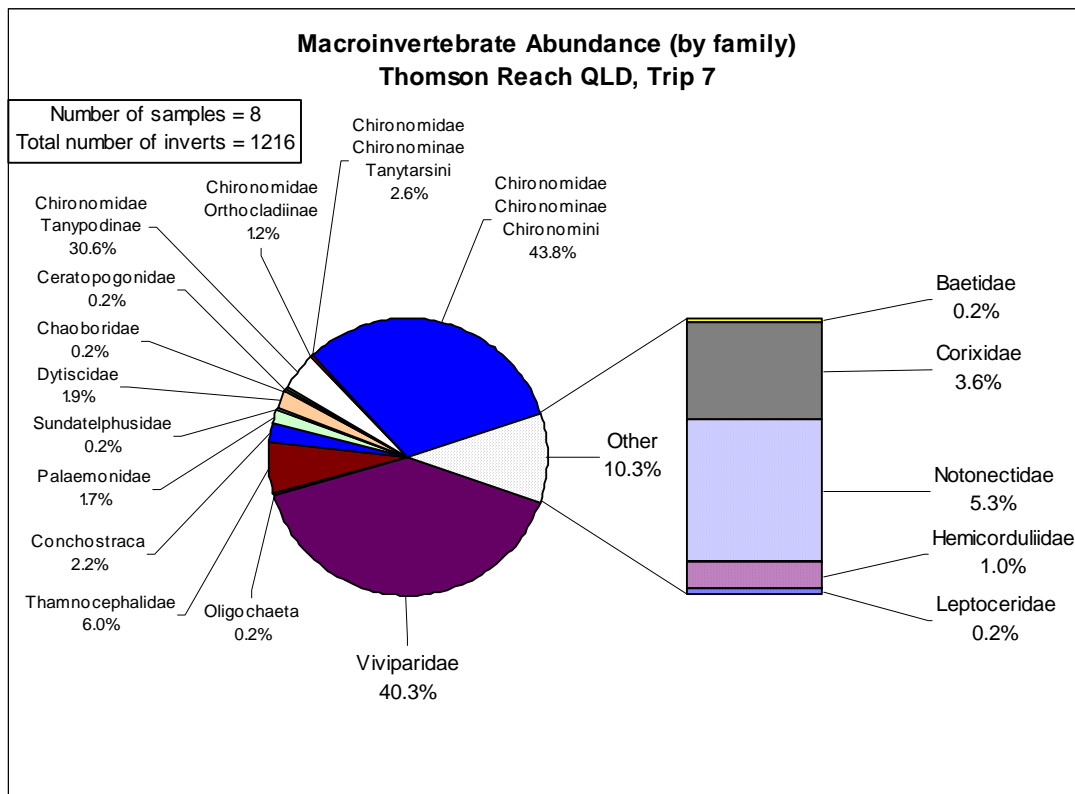
NEALES RIVER ARIDFLO TRIPS 5 & 6: Generally family abundance shown. Taxa represented if abundance > 0.1%. Taxa have same order of appearance on all plots and the same shading. Bar on the right relates to mayflies, true bugs, dragonflies, damselflies and caddises. All other taxa are in the pie on the left.



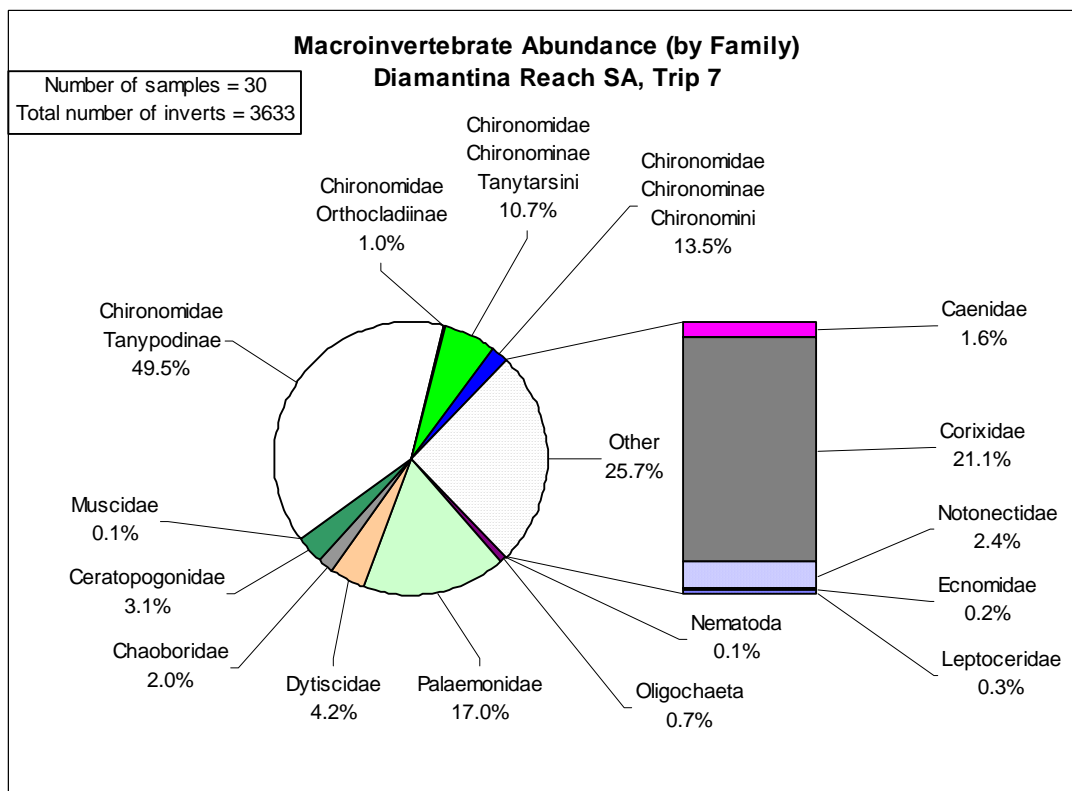
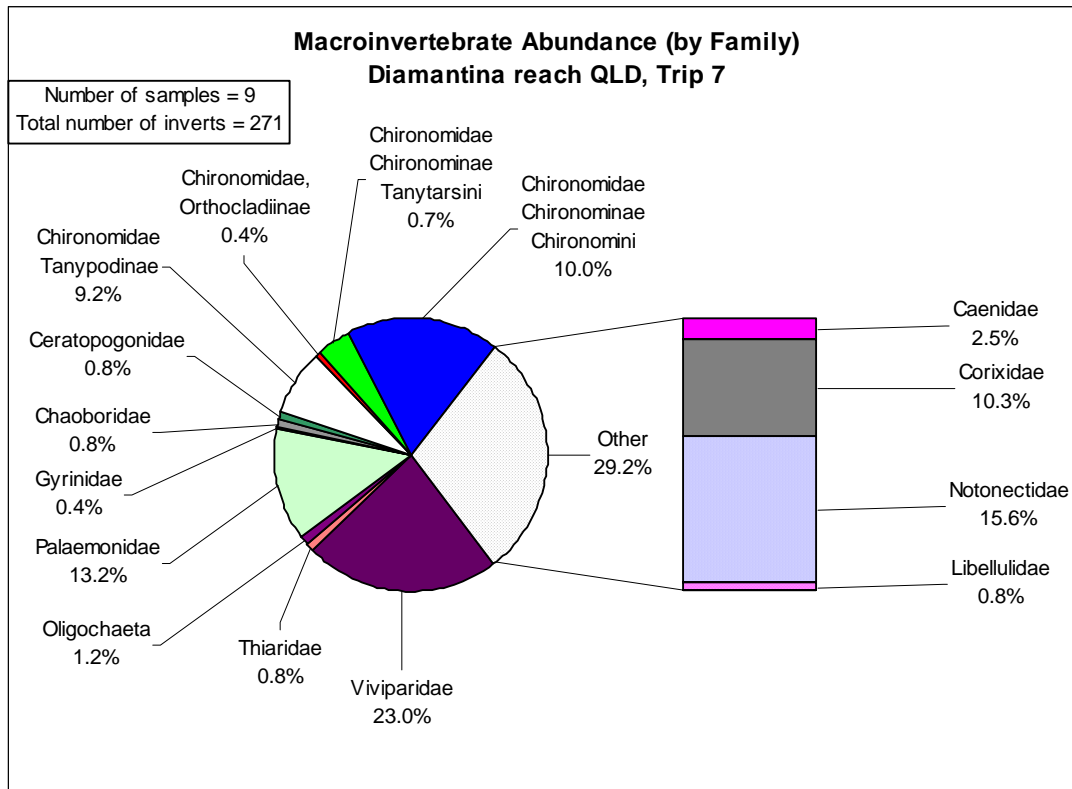
COOPER CREEK ARIDFLO TRIP 6: Generally family abundance shown. Taxa represented if abundance > 0.1%. Taxa have same order of appearance on all plots and the same shading. Bar on the right relates to mayflies, true bugs, dragonflies, damselflies and caddises. All other taxa are in the pie on the left.



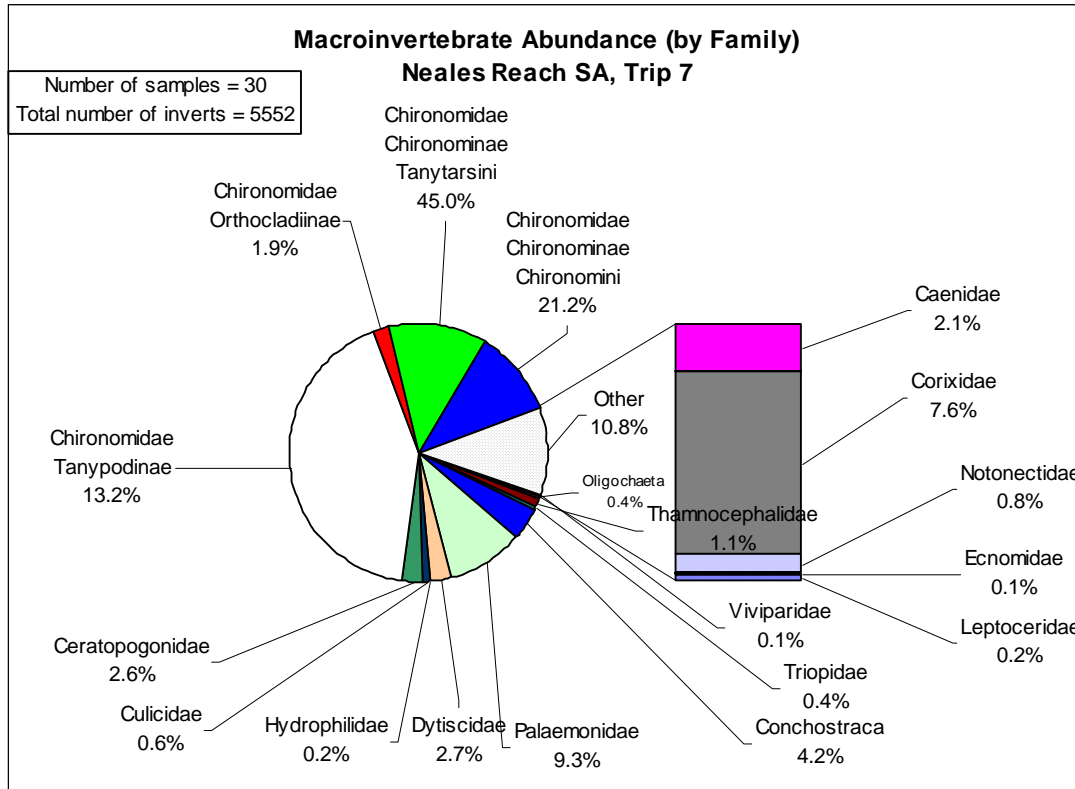
DIAMANTINA RIVER ARIDFLO TRIP 6: Generally family abundance shown. Taxa represented if abundance > 0.1%. Taxa have same order of appearance on all plots and the same shading. Bar on the right relates to mayflies, true bugs, dragonflies, damselflies and caddises. All other taxa are in the pie on the left.



COOPER CREEK ARIDFLO TRIP 7: Generally family abundance shown. Taxa represented if abundance > 0.1%. Taxa have same order of appearance on all plots and the same shading. Bar on the right relates to mayflies, true bugs, dragonflies, damselflies and caddises. All other taxa are in the pie on the left.



DIAMANTINA RIVER ARIDFLO TRIP 7: Generally family abundance shown. Taxa represented if abundance > 0.1%. Taxa have same order of appearance on all plots and the same shading. Bar on the right relates to mayflies, true bugs, dragonflies, damselflies and caddises. All other taxa are in the pie on the left.



NEALES RIVER ARIDFLO TRIP 7: Generally family abundance shown. Taxa represented if abundance > 0.1%. Taxa have same order of appearance on all plots and the same shading. Bar on the right relates to mayflies, true bugs, dragonflies, damselflies and caddises. All other taxa are in the pie on the left.

Appendix 2D. Fish

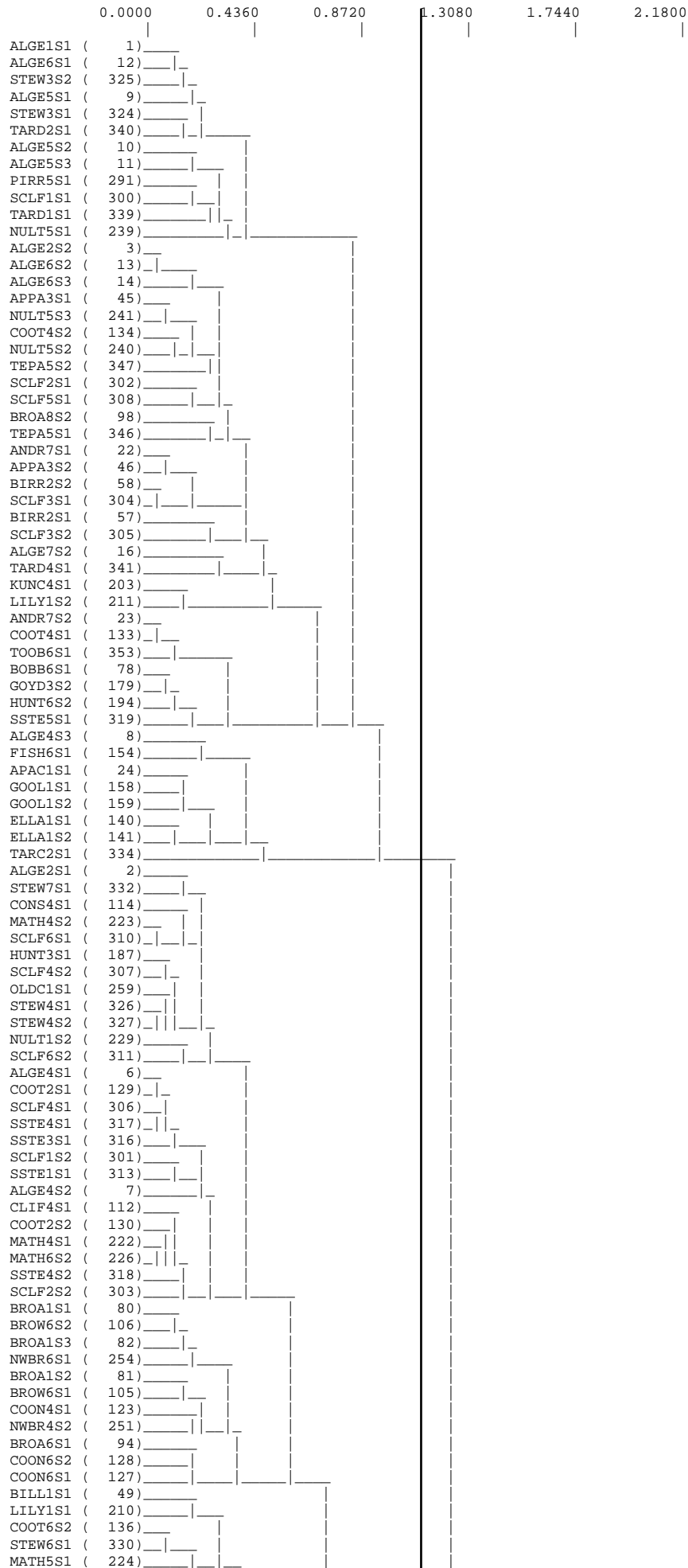
2m seine dendrogram

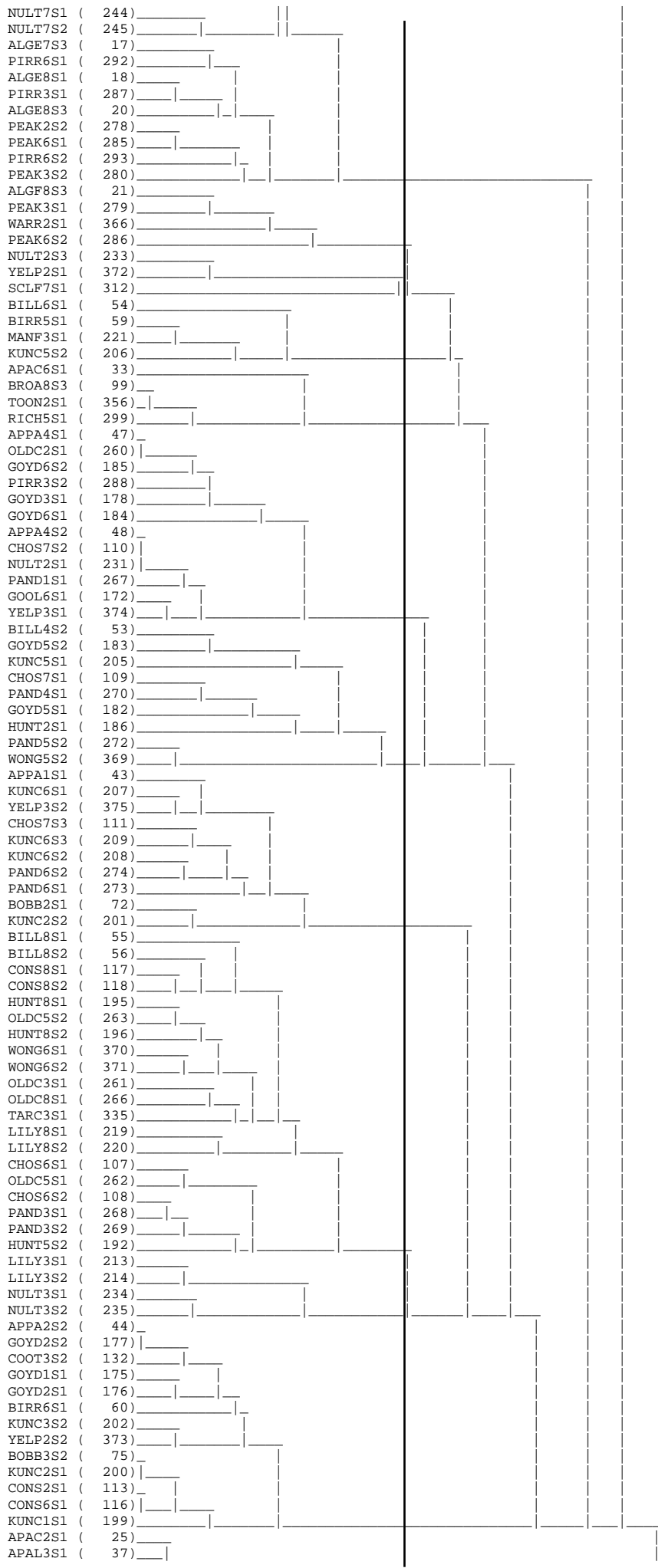
Detailed dendrogram of all sites containing at least one fish species caught using the 2m gear.

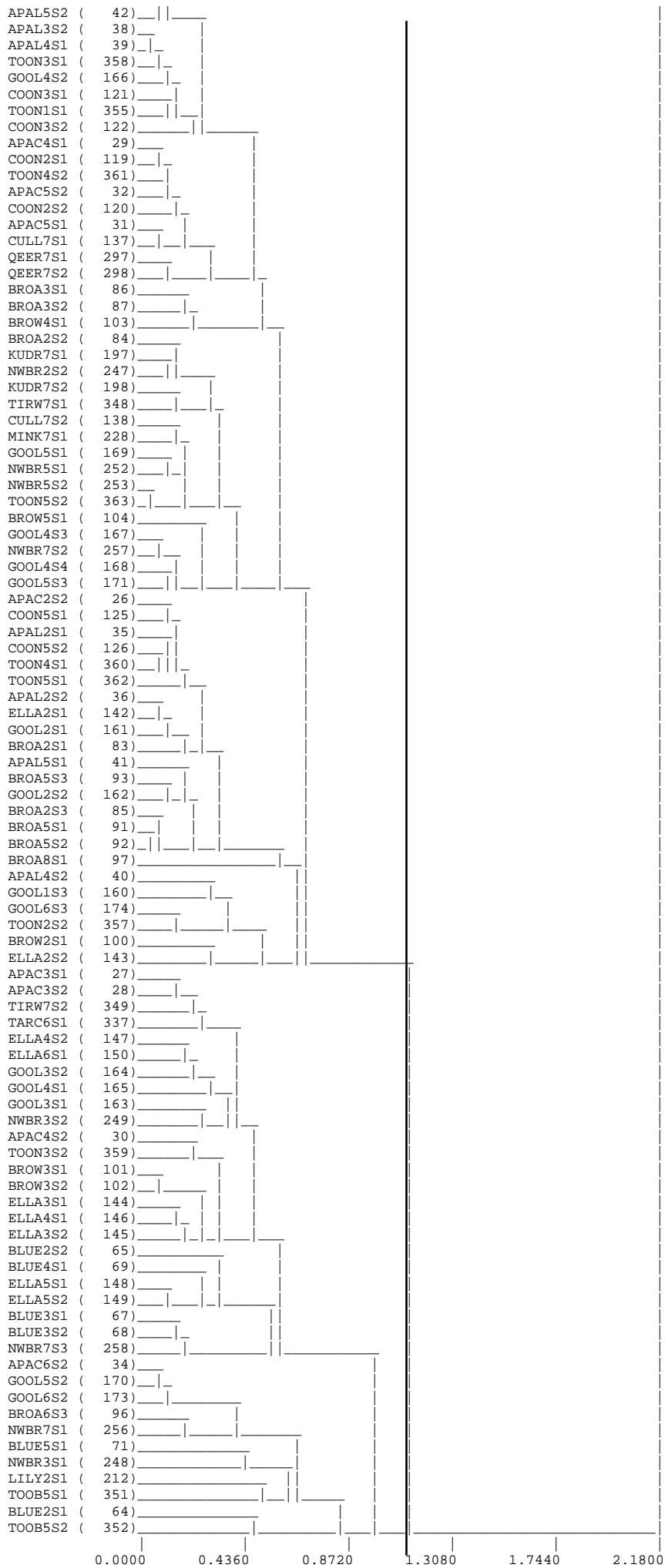
Fyke dendrogram

Detailed dendrogram of all sites containing at least one fish species caught using the fyke gear.

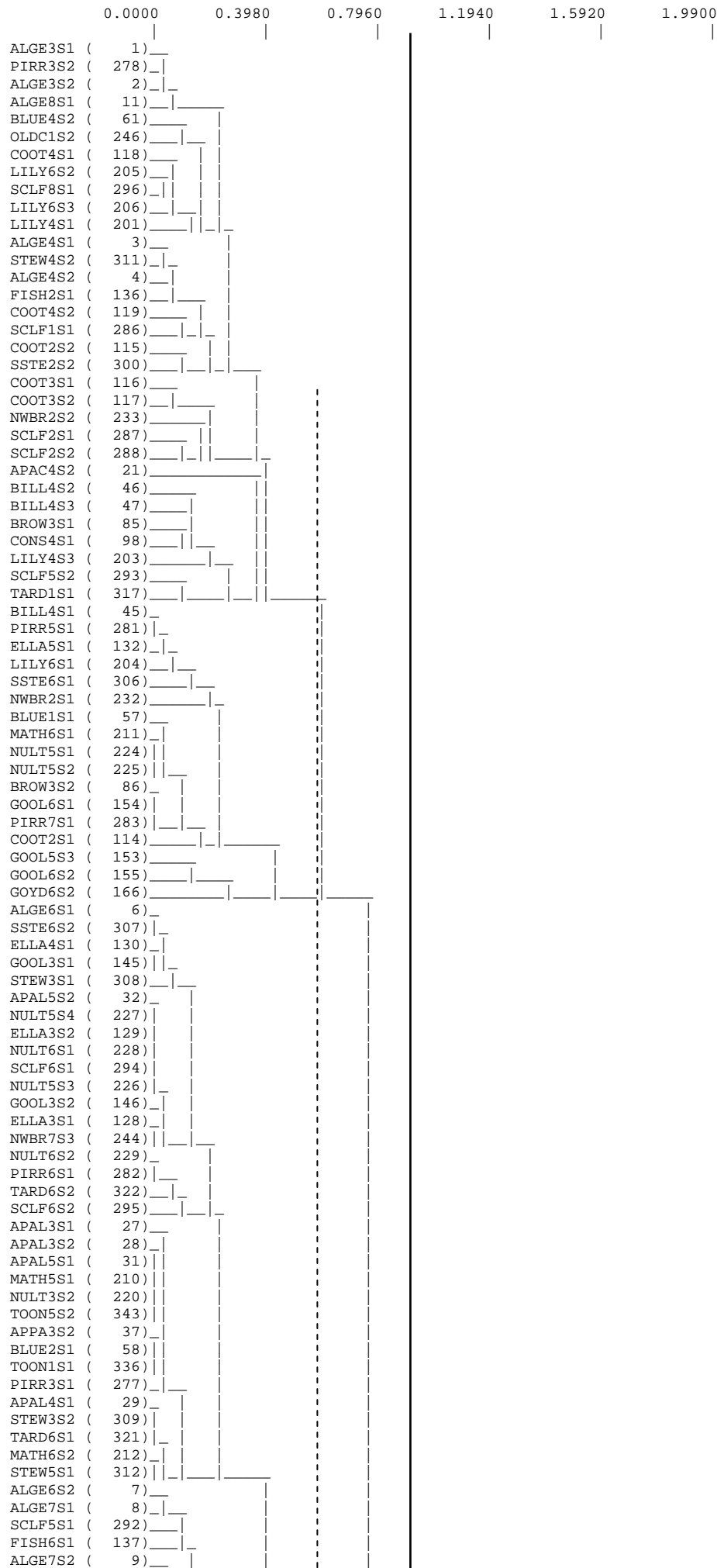
dend AridFlo 2ms 8 trips, mean logabun, 5 reaches, 17 grps AF2ms.den.doc







dend AridFlo fyke 8 trips, logabun, 5 reaches AFfyk.den.doc

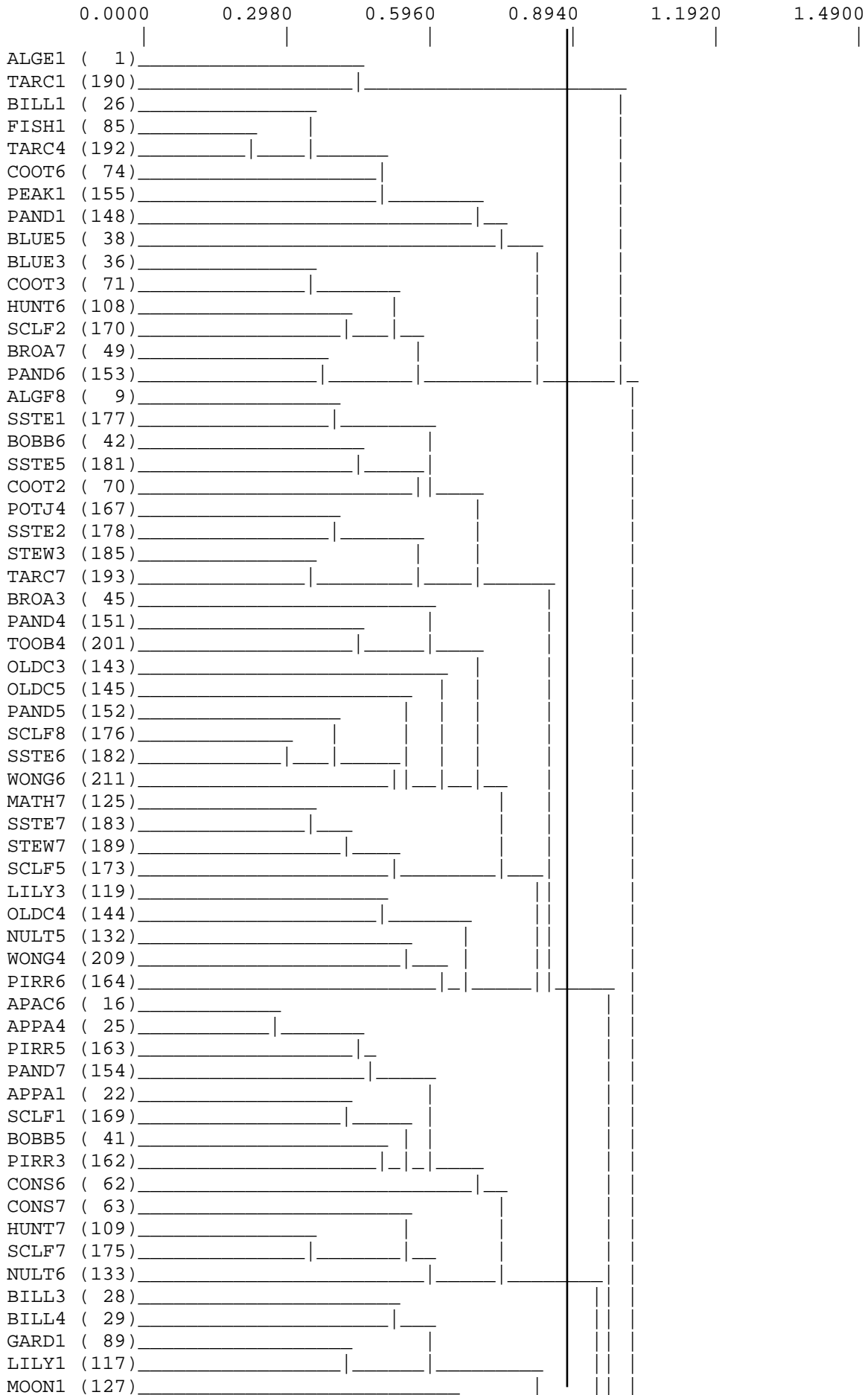


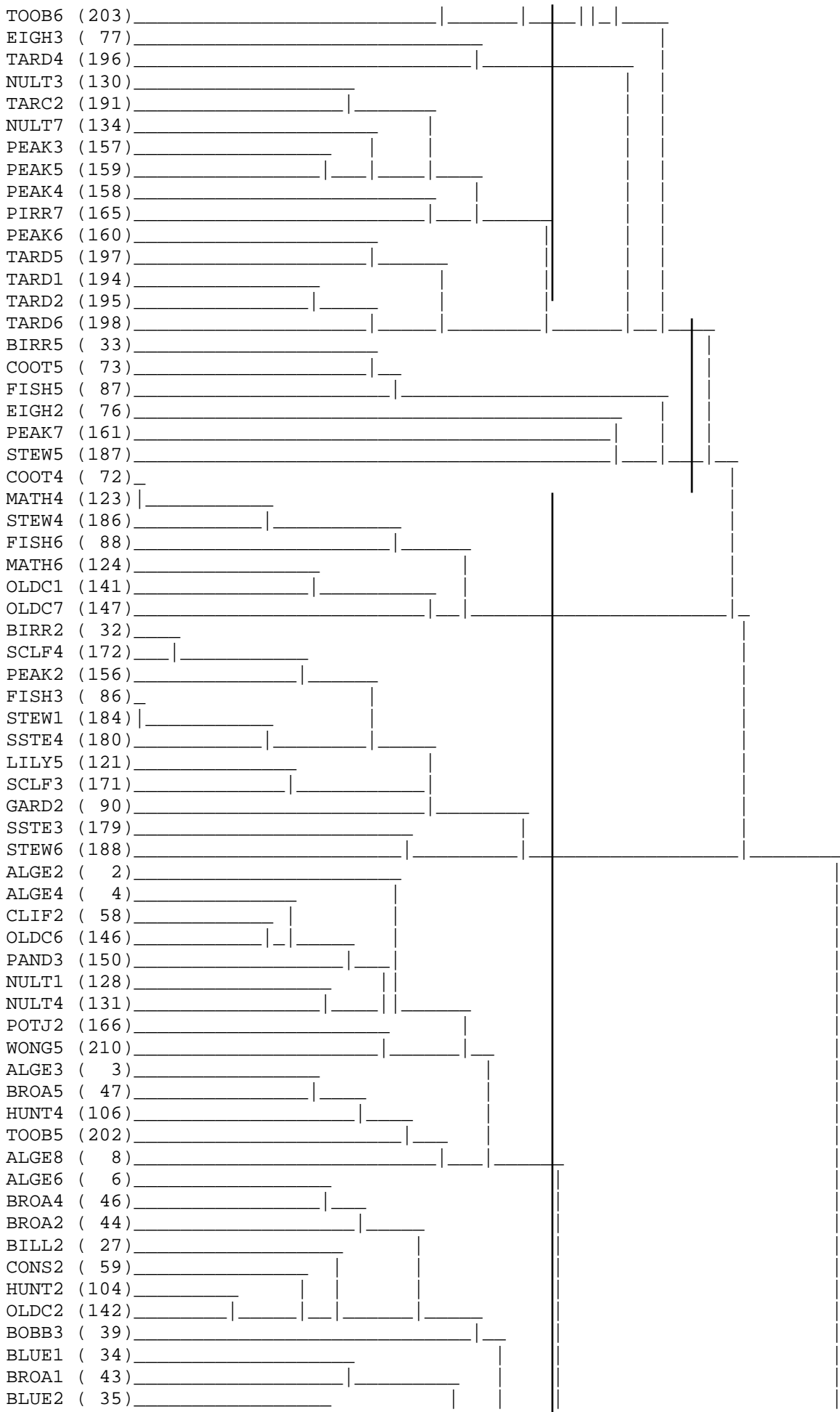
Appendix 2E. Waterbirds

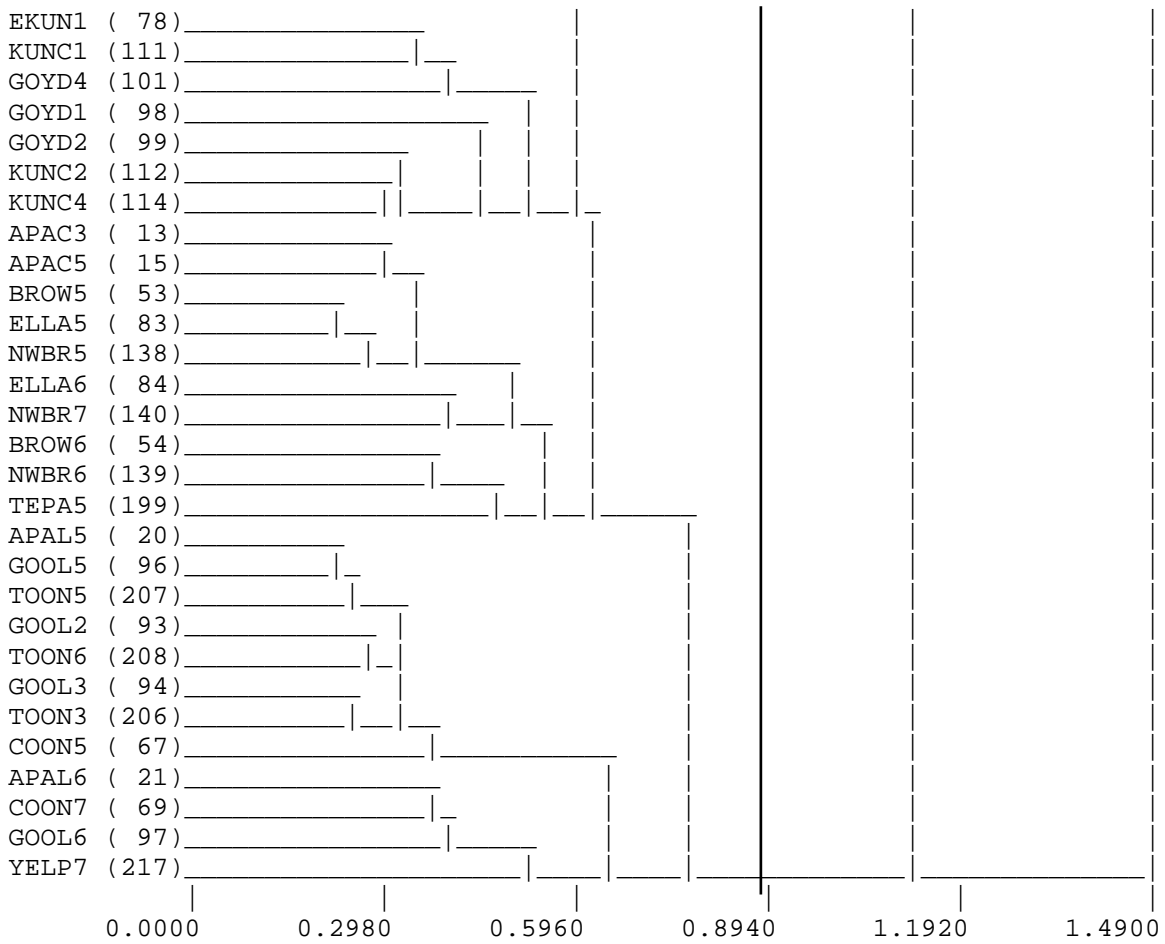
Waterbirds dendrogram

Detailed dendrogram of all sites containing more than one waterbird species.

dend WBIRD7 - log10tr, sing spp removed WBd7.den.doc







Appendix 2F. Vegetation

Vegetation dendrogram

Detailed dendrogram of all sites using riparian vegetation data.

dend Perennial Veg 7 trips rankabun VEG7.den.doc

